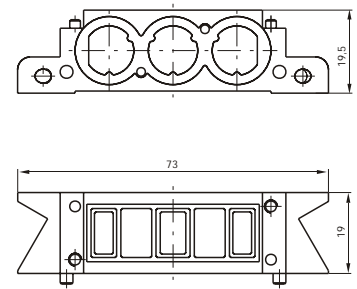




**Modular base**

Ordering code

**2430.01**

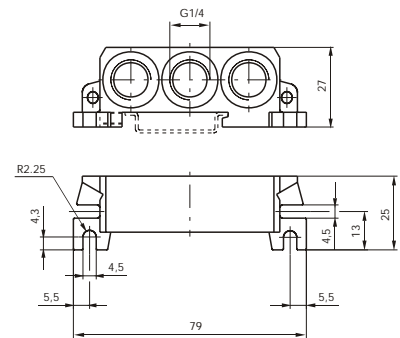


Weight gr. 85

**Right inlet base**

Ordering code

**2430.02**

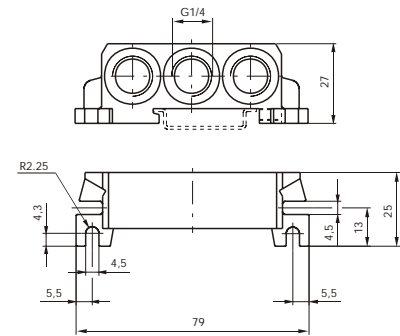


Weight gr. 120

**Left inlet base**

Ordering code

**2430.03**

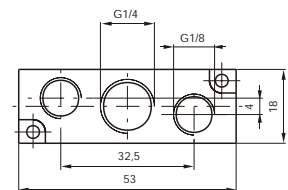


Weight gr. 125

**Intermediate air intake**  
(to be assembled instead of a valve)

Ordering code

**2430.10**

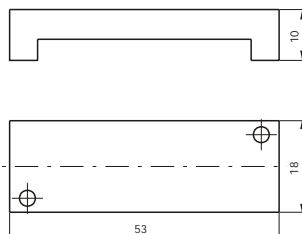


Weight gr. 30

**Closing plate**

Ordering code

**2430.00**



Weight gr. 20

**Diaphragm plug**

Ordering code

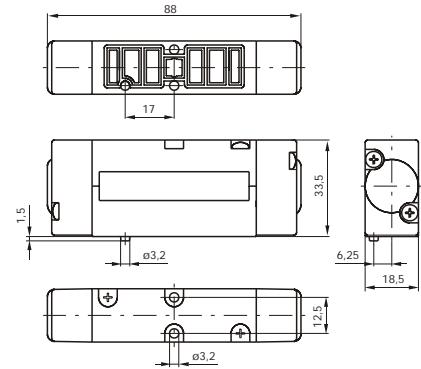
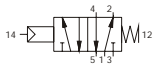
**2430.17**



Weight gr. 5

5/2

**Pneumatic Spring**

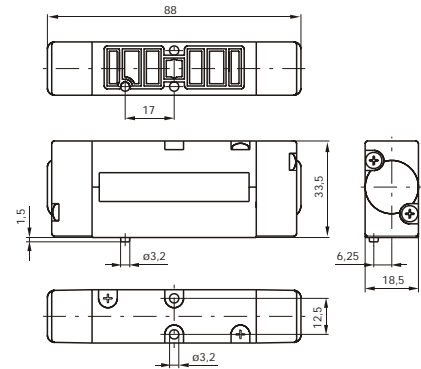
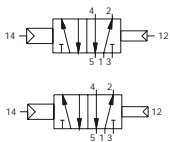


Weight gr. 155

Minimum operating pressure 2 bar

5/2

**Pneumatic Differential**

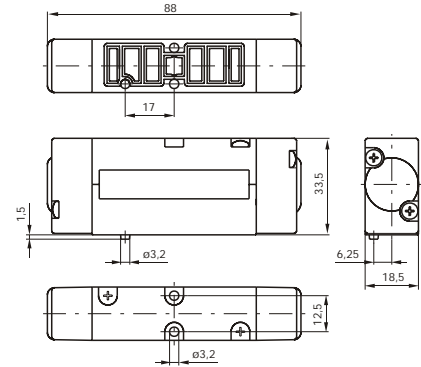


Weight gr. 155

Minimum operating pressure 2 bar

5/2

**Pneumatic Pneumatic**



Weight gr. 155

Minimum operating pressure 1,5 bar

**Ordering codes**

2445 . 52 . 00 .

PILOTING:  
16 = Pneum. - Diff./al  
17 = Pneum. - Diff./al ext.  
18 = Pneum. - Pneum.  
19 = Pneum. - Spring

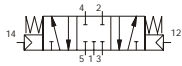
Operational characteristics	Fluid	Max working pressure	Operating temperature		Flow rate at 6 bar with $\Delta p = 1$	Orifice size	Working ports size
	Filtered and lubricated or not lubricated air	10 bar	min. -5°C	max. +50°C	550 NI/min	$\varnothing 5$	/



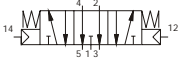
5/3

**Pneumatic  
Pneumatic**

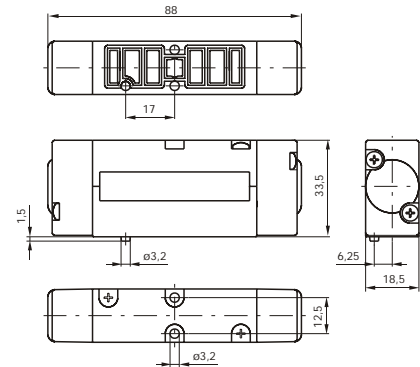
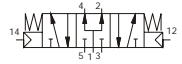
*Closed centres*



*Open centres*



*Pressure centres*



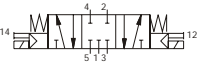
Weight gr. 165

Minimum operating pressure 3 bar

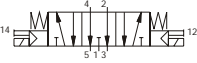
5/3

**Miniature solenoid  
Miniature solenoid**

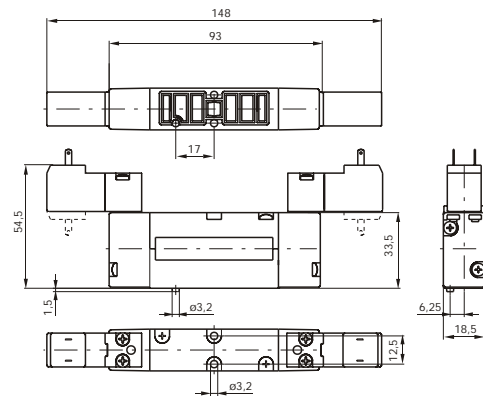
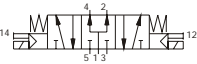
*Closed centres*



*Open centres*



*Pressure centres*



Weight gr. 235

Minimum operating pressure 3 bar

**Ordering codes**

**244 . 53 . . . .**

**TYPE:**  
1 = Electropilot exhaust on base  
(only for self feeding valves)  
5 = Electropilot exhaust on pilot  
(for all versions)

**PILOTING:**  
18 = Pneum. - Pneum.  
35 = Sv. - Sv.

**FUNCTION:**  
31 = 3 pos. CC  
32 = 3 pos. OC  
33 = 3 pos. PC

**VOLTAGE:**  
01 = Miniature sol. 12 VDC  
02 = Miniature sol. 24 VDC  
05 = Miniature sol. 24 VAC  
06 = Miniature sol. 110 VAC  
07 = Miniature sol. 220 VAC  
11 = Miniature sol. 12 VDC Downward  
12 = Miniature sol. 24 VDC Downward  
15 = Miniature sol. 24 VAC Downward  
16 = Miniature sol. 110 VAC Downward  
17 = Miniature sol. 220 VAC Downward

Operational characteristics	Fluid	Max working pressure	Operating temperature		Flow rate at 6 bar with $\Delta p = 1$	Orifice size	Working ports size
	Filtered and lubricated or not lubricated air	10 bar	min. -5°C	max. +50°C	550 NI/min	$\varnothing 5$	/



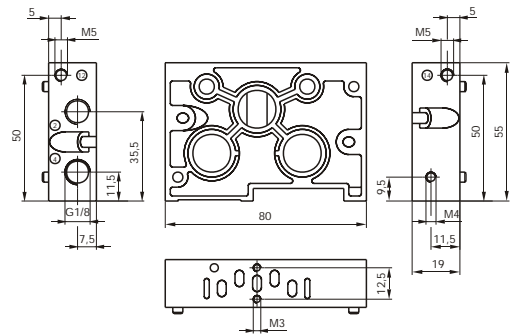
**Modular base**

Ordering code

**2440.01**

**2440.11**

Modular base for  
single separate inlet

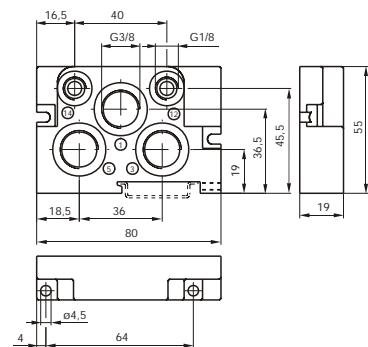


Weight gr. 110

**Right inlet base**

Ordering code

**2440.02**

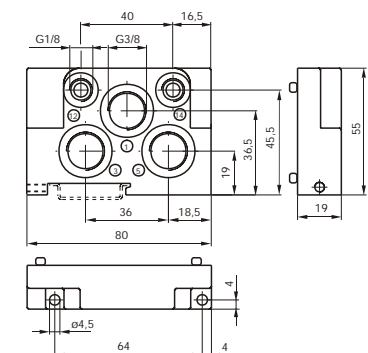


Weight gr. 110

**Left inlet base**

Ordering code

**2440.03**

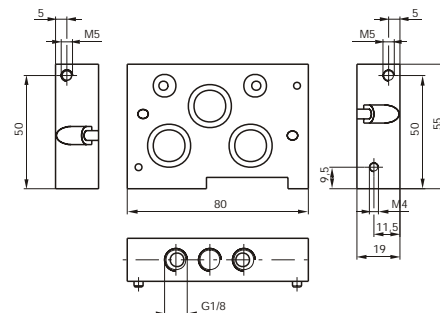


Weight gr. 110

**Intermediate air intake**

Ordering code

**2440.10**

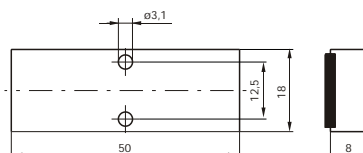


Weight gr. 185

**Closing plate**

Ordering code

**2440.00**



Weight gr. 25

**Diaphragm plug**

Ordering code

**2440.17**

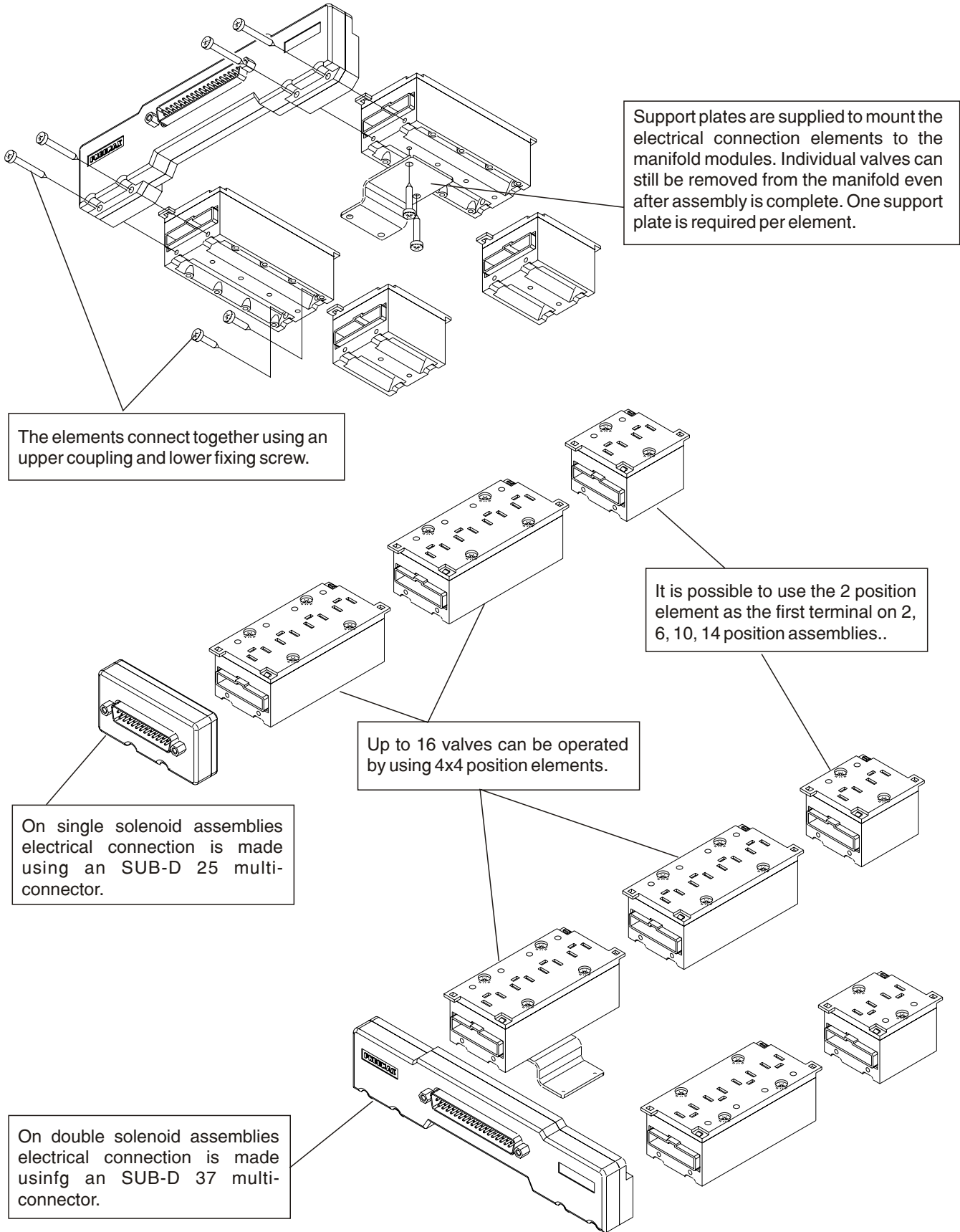


Weight gr. 8



The integral electrical design for the series 2400 valve is extremely flexible, allowing the production of pre-wired solenoid valve manifolds, the configuration of which can be determined at the point of assembly. The 24 VDC, 12 VDC (equivalent PNP) and 24 VAC\* modules are available with 2 or 4 positions. The system assembled is designed for an IP40 protection. IP65 is available on request.

\* Attention : If the working tension is 24 VAC DO NOT using modules with protection diode



Support plates are supplied to mount the electrical connection elements to the manifold modules. Individual valves can still be removed from the manifold even after assembly is complete. One support plate is required per element.

The elements connect together using an upper coupling and lower fixing screw.











It is possible to use the 2 position element as the first terminal on 2, 6, 10, 14 position assemblies..

Up to 16 valves can be operated by using 4x4 position elements.

On single solenoid assemblies electrical connection is made using an SUB-D 25 multi-connector.

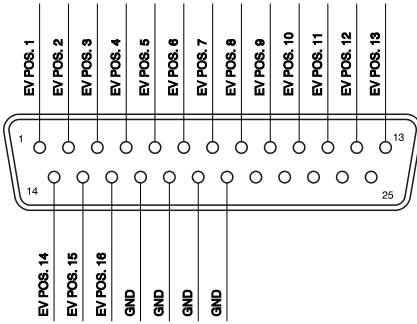
On double solenoid assemblies electrical connection is made using an SUB-D 37 multi-connector.



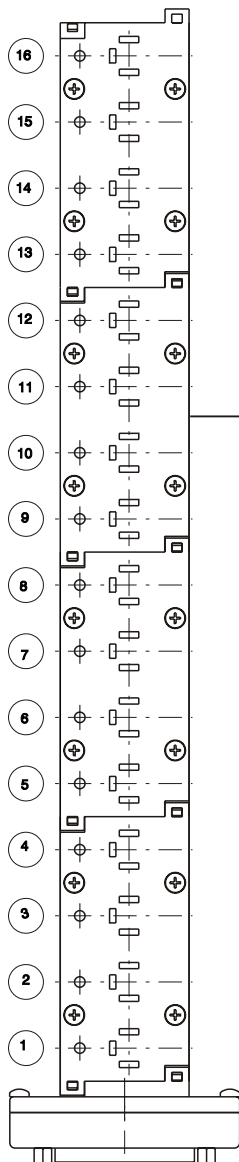
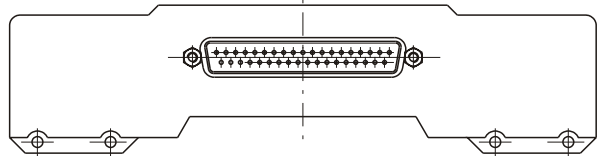
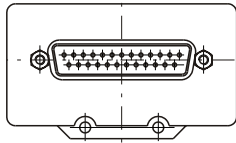
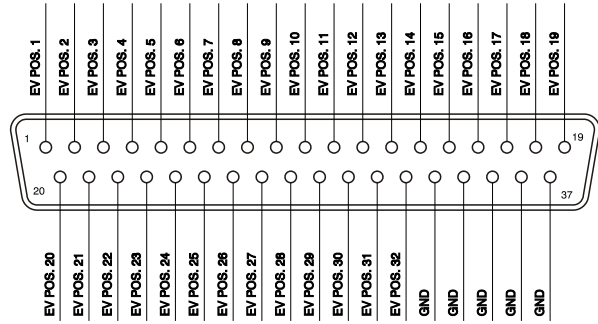
<p><b>4 positions module</b></p> <hr/> <p>Ordering code</p> <hr/> <p><b>2400 . 04 .</b></p> 		<p><b>2 positions module</b></p> <hr/> <p>Ordering code</p> <hr/> <p><b>2400 . 02 .</b></p> 	
<p>TYPE: 00 = (module 4 pos. Left IP40 - PNP) 01 = (module 4 pos. Right IP40 - PNP) 02 = (module 4 pos. Left IP40 with protection diode - PNP) * 03 = (module 4 pos. Right IP40 with protection diode - PNP) * 10 = (module 4 pos. Left IP65 - PNP) 11 = (module 4 pos. Right IP65 - PNP) 12 = (module 4 pos. Left IP65 with protection diode - PNP) * 13 = (module 4 pos. Right IP65 with protection diode - PNP) *</p> <p>* ONLY FOR VDC</p> <p>Weight gr. 50</p>		<p>TYPE: 00 = (module 2 pos. Left IP40 - PNP) 01 = (module 2 pos. Right IP40 - PNP) 02 = (module 2 pos. Left IP40 with protection diode - PNP) * 03 = (module 2 pos. Right IP40 with protection diode - PNP) * 10 = (module 2 pos. Left IP65 - PNP) 11 = (module 2 pos. Right IP65 - PNP) 12 = (module 2 pos. Left IP65 with protection diode - PNP) * 13 = (module 4 pos. Right IP65 with protection diode - PNP) *</p> <p>* ONLY FOR VDC</p> <p>Weight gr. 30</p>	
<p><b>37 contacts front connector IP65</b></p> <hr/> <p>Ordering code</p> <hr/> <p><b>2400 . 37 . 10</b></p>  <p>Weight gr. 120</p>		<p><b>25 contacts connector IP65</b></p> <hr/> <p>Ordering code</p> <hr/> <p><b>2400 . 25 . 10</b></p>  <p>Weight gr. 40</p>	
<p><b>Plug</b></p> <hr/> <p>Ordering code</p> <hr/> <p><b>2400.00</b></p>  <p>Weight gr. 5</p>	<p><b>Closing plate electrical positions</b></p> <hr/> <p>Ordering code</p> <hr/> <p><b>2400.15.00</b></p>  <p>Weight gr. 2</p>	<p><b>Cable c/w connector mobile positioning</b></p> <hr/> <p>Ordering code</p> <hr/> <p><b>2400 .</b></p> <div style="display: flex; justify-content: space-around;"> <div style="border: 1px solid black; padding: 2px;"> <p>CONNECTOR TYPE 25 = 25 contacts 37 = 37 contacts</p> </div> <div style="border: 1px solid black; padding: 2px;"> <p>CABLE LENGTH 03 = 3 meters 05 = 5 meters 10 = 10 meters</p> </div> <div style="border: 1px solid black; padding: 2px;"> <p>00 = connector IP40 10 = connector IP65 (with protection device)</p> </div> </div>	
<p><b>VDMA support plate</b></p> <hr/> <p>Ordering code</p> <hr/> <p><b>2440.50</b></p>  <p>Weight gr. 20</p>		<p><b>FLAT support plate</b></p> <hr/> <p>Ordering code</p> <hr/> <p><b>2430.50</b></p>  <p>Weight gr. 20</p>	
<p><b>4 positions box with 25 contacts connector</b></p> <hr/> <p>Ordering code</p> <hr/> <p><b>2400.04.25</b></p>  <p>Weight gr. 65</p>		<p><b>15 mm male connector with 2 metres cable</b></p> <hr/> <p>Ordering code</p> <hr/> <p><b>2400.15.02</b></p>  <p>Weight gr. 98</p>	



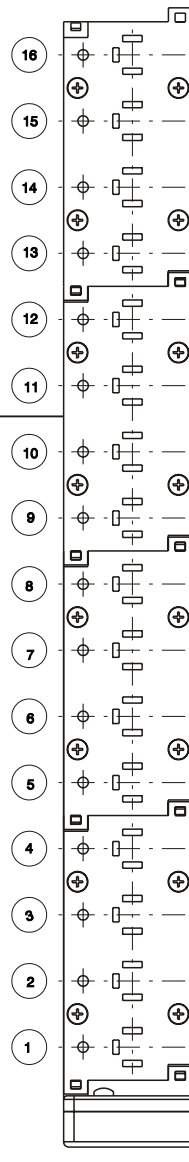
**SUB-D 25 CONTACTS CONNECTOR**



**SUB-D 37 CONTACTS CONNECTOR**



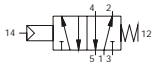
Left modules



Right modules

5/2

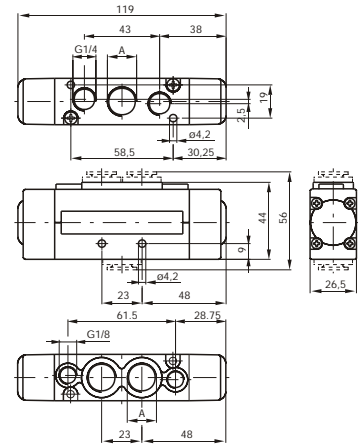
**Pneumatic Spring**



Weight gr. 235

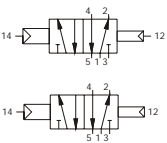
Minimum operating pressure 2 bar

For dimension 'A'  
see ordering code



5/2

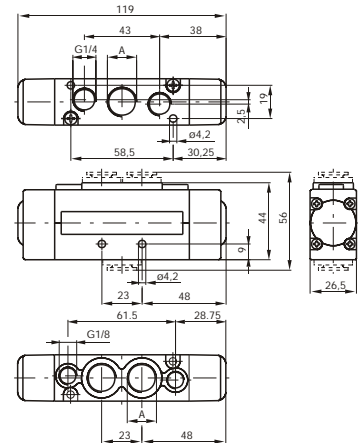
**Pneumatic Differential**



Weight gr. 235

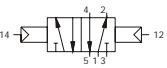
Minimum operating pressure 2 bar

For dimension 'A'  
see ordering code



5/2

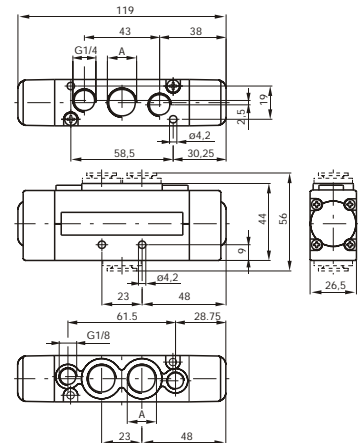
**Pneumatic Pneumatic**



Weight gr. 235

Minimum operating pressure 1,5 bar

For dimension 'A'  
see ordering code



**Ordering codes**

261 . 52 . 00 .

TYPE:  
1 = Connection 'A' = G 3/8"  
5 = Connection 'A' = G 1/4"  
8 = Connection 'A' = Quick fitting, tube ø 10

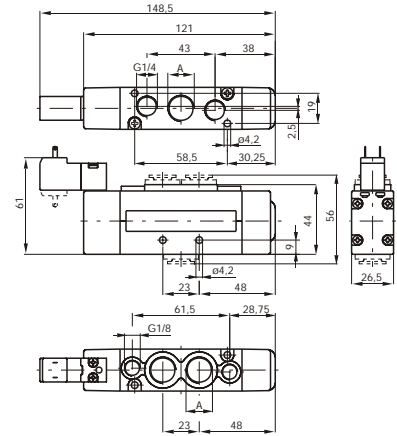
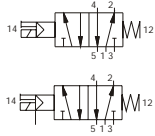
PILOTING:  
16 = Pneum. - Diff./al  
17 = Pneum. - Diff./al ext.  
18 = Pneum. - Pneum.  
19 = Pneum. - Spring

Operational characteristics	Fluid	Max working pressure	Operating temperature		Flow rate at 6 bar with $\Delta p = 1$	Orifice size	Working ports size
	Filtered and lubricated or not lubricated air	10 bar	min. -5°C	max. +50°C	1500	ø 9	G1/4" - G3/8" - T.10



5/2

**Miniature solenoid  
Spring**



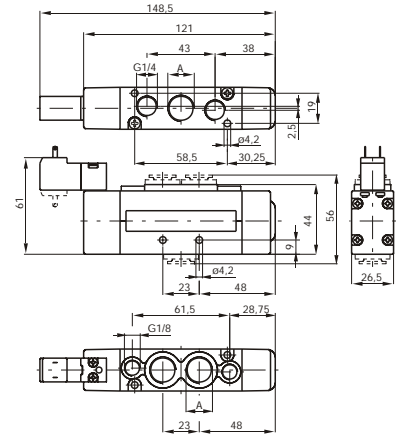
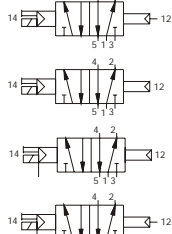
Weight gr. 275

Minimum operating pressure 2 bar

For dimension 'A'  
see ordering code

5/2

**Miniature solenoid  
Diff./al**



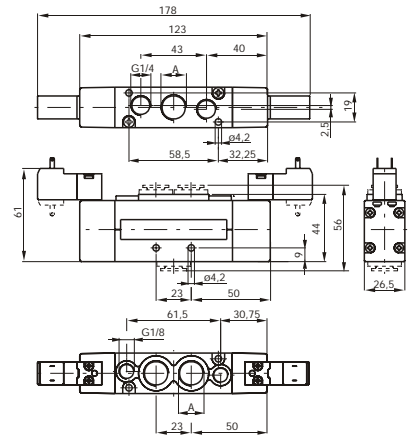
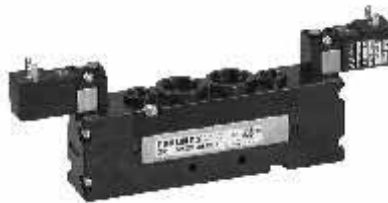
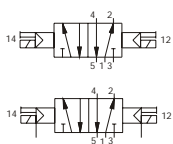
Weight gr. 275

Minimum operating pressure 2 bar

For dimension 'A'  
see ordering code

5/2

**Miniature solenoid  
Miniature solenoid**



Weight gr. 295

Minimum operating pressure 1,5 bar

For dimension 'A'  
see ordering code

**Ordering codes**

261 . 52 . 00 . .

**TYPE:**

- 1 = Connection 'A' = G 3/8"
- 5 = Connection 'A' = G 1/4"
- 8 = Connection 'A' = Quick fitting, tube ø 10

**PILOTING:**

- 24 = Sv. ext. - Sv. ext.
- 26 = Sv. ext. - Diff./al
- 27 = Sv. ext. - Diff./al ext.
- 29 = Sv. ext. - Spring
- 35 = Sv. - Sv.
- 36 = Sv. - Diff./al
- 37 = Sv. - Diff./al ext.
- 39 = Sv. - Spring

**VOLTAGE:**

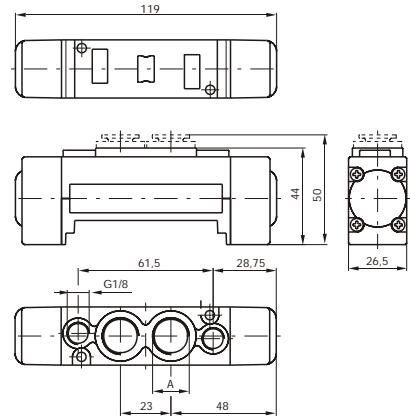
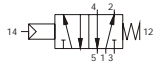
- 01 = Miniature sol. 12 VDC
- 02 = Miniature sol. 24 VDC
- 05 = Miniature sol. 24 VAC
- 06 = Miniature sol. 110 VAC
- 07 = Miniature sol. 220 VAC
- 11 = Miniature sol. 12 VDC Downward
- 12 = Miniature sol. 24 VDC Downward
- 15 = Miniature sol. 24 VAC Downward
- 16 = Miniature sol. 110 VAC Downward
- 17 = Miniature sol. 220 VAC Downward

Operational characteristics	Fluid	Max working pressure	Operating temperature		Flow rate at 6 bar with $\Delta p = 1$	Orifice size	Working ports size
	Filtered and lubricated or not lubricated air	10 bar	min. -5°C	max. +50°C	1500	ø 9	G1/4" - G3/8" - T.10



5/2

**Pneumatic Spring**



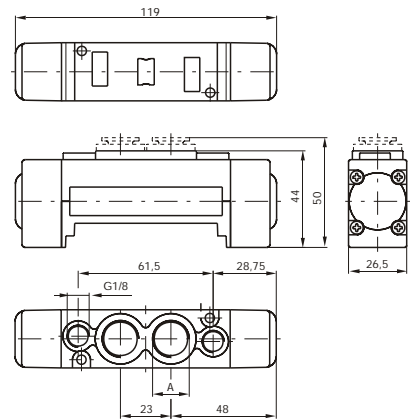
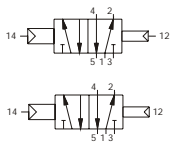
Weight gr. 185

Minimum operating pressure 2 bar

For dimension 'A'  
see ordering code

5/2

**Pneumatic Differential**



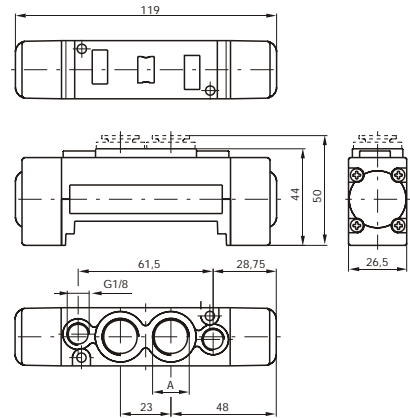
Weight gr. 185

Minimum operating pressure 2 bar

For dimension 'A'  
see ordering code

5/2

**Pneumatic Pneumatic**



Weight gr. 185

Minimum operating pressure 1,5 bar

For dimension 'A'  
see ordering code

**Ordering codes**

**263 . 52 . 00 .**

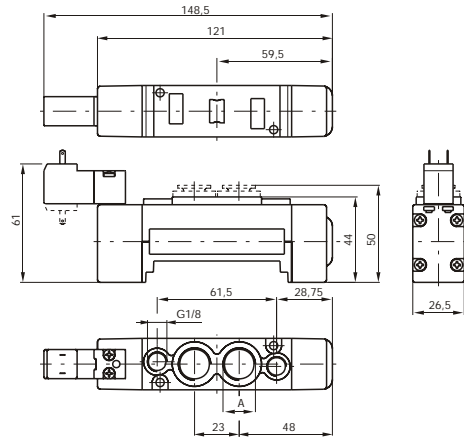
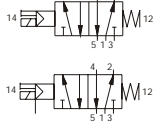
TYPE:  
1 = Connection 'A' = G 3/8"  
5 = Connection 'A' = G 1/4"  
8 = Connection 'A' = Quick fitting, tube ø 10

PILOTING:  
16 = Pneum. - Diff./al  
17 = Pneum. - Diff./al ext.  
18 = Pneum. - Pneum.  
19 = Pneum. - Spring

Operational characteristics	Fluid	Max working pressure	Operating temperature		Flow rate at 6 bar with $\Delta p = 1$	Orifice size	Working ports size
	Filtered and lubricated or not lubricated air	10 bar	min. -5°C	max. +50°C	1500	ø 9	G1/4" - G3/8" - T.10

5/2

**Miniature solenoid  
Spring**



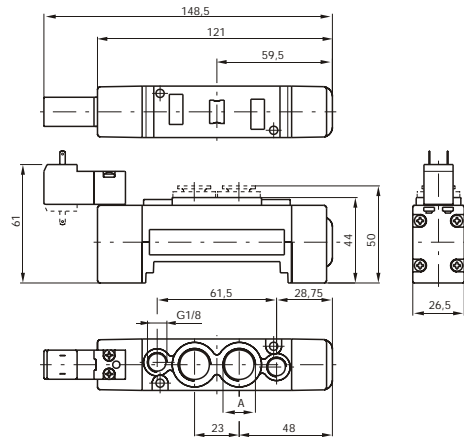
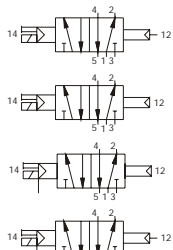
Weight gr. 220

Minimum operating pressure 2 bar

For dimension 'A'  
see ordering code

5/2

**Miniature solenoid  
Diff./al**



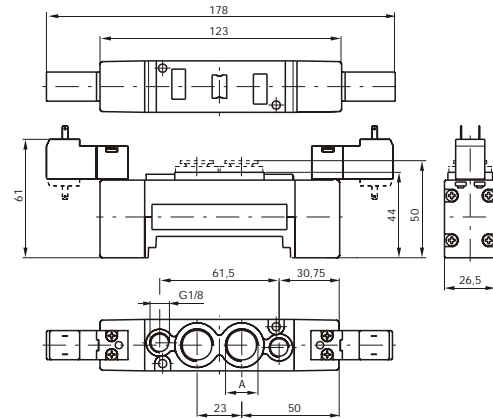
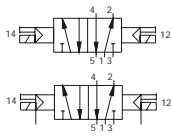
Weight gr. 220

Minimum operating pressure 2 bar

For dimension 'A'  
see ordering code

5/2

**Miniature solenoid  
Miniature solenoid**



Weight gr. 250

Minimum operating pressure 1,5 bar

For dimension 'A'  
see ordering code

**Ordering codes**

263 . 52 . 00 . .

**TYPE:**  
1 = Connection 'A' = G 3/8"  
5 = Connection 'A' = G 1/4"  
8 = Connection 'A' = Quick fitting, tube ø 10

**PILOTING:**  
24 = Sv. ext. - Sv. ext.  
26 = Sv. ext. - Diff./al  
27 = Sv. ext. - Diff./al ext.  
29 = Sv. ext. - Spring  
35 = Sv. - Sv.  
36 = Sv. - Diff./al  
37 = Sv. - Diff./al ext.  
39 = Sol. - Spring

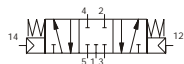
**VOLTAGE:**  
01 = Miniature sol. 12 VDC  
02 = Miniature sol. 24 VDC  
05 = Miniature sol. 24 VAC  
06 = Miniature sol. 110 VAC  
07 = Miniature sol. 220 VAC  
11 = Miniature sol. 12 VDC Downward  
12 = Miniature sol. 24 VDC Downward  
15 = Miniature sol. 24 VAC Downward  
16 = Miniature sol. 110 VAC Downward  
17 = Miniature sol. 220 VAC Downward

Operational characteristics	Fluid	Max working pressure	Operating temperature		Flow rate at 6 bar with Δ p = 1	Orifice size	Working ports size
	Filtered and lubricated or not lubricated air	10 bar	min. -5°C	max. +50°C	1500	ø 9	G1/4" - G3/8" - T.10

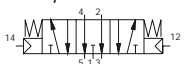
5/3

**Pneumatic  
Pneumatic**

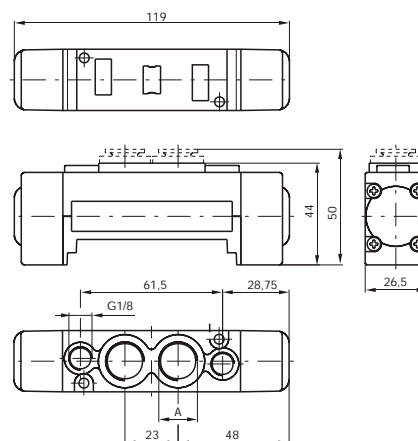
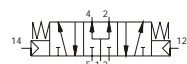
*Closed centres*



*Open centres*



*Pressure centres*



Weight gr. 195

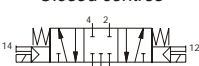
Minimum operating pressure 3 bar

For dimension 'A'  
see ordering code

5/3

**Miniature solenoid  
Miniature solenoid**

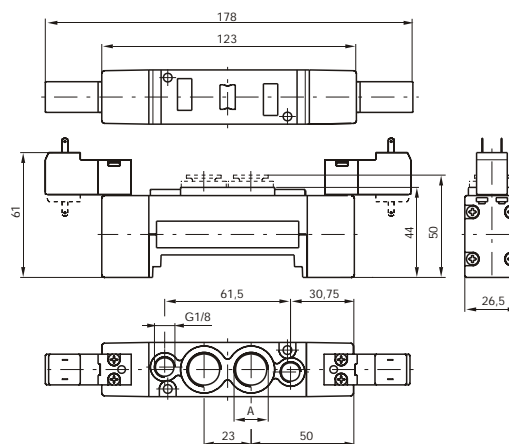
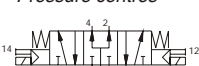
*Closed centres*



*Open centres*



*Pressure centres*



Weight gr. 270

Minimum operating pressure 3 bar

For dimension 'A'  
see ordering code

**Ordering codes**

**263 . 53 . . . .**

**TYPE:**  
1 = Connection "A" = G 3/8"  
5 = Connection "A" = G 1/4"  
8 = Connection "A" = Quick fitting, tube ø 10

**PILOTING:**  
18 = Pneum. - Pneum.  
35 = Sv. - Sv.

**FUNCTION:**  
31 = 3 pos. CC  
32 = 3 pos. OC  
33 = 3 pos. PC

**VOLTAGE:**  
01 = Miniature sol. 12 VDC  
02 = Miniature sol. 24 VDC  
05 = Miniature sol. 24 VAC  
06 = Miniature sol. 110 VAC  
07 = Miniature sol. 220 VAC  
11 = Miniature sol. 12 VDC Downward  
12 = Miniature sol. 24 VDC Downward  
15 = Miniature sol. 24 VAC Downward  
16 = Miniature sol. 110 VAC Downward  
17 = Miniature sol. 220 VAC Downward

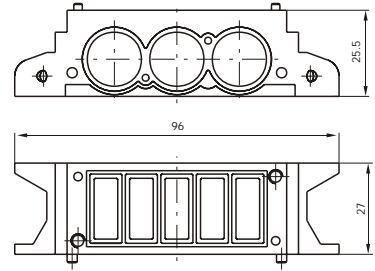
Operational characteristics	Fluid	Max working pressure	Operating temperature		Flow rate at 6 bar with $\Delta p = 1$	Orifice size	Working ports size
	Filtered and lubricated or not lubricated air	10 bar	min. -5°C	max. +50°C	1350	ø 9	G1/4" - G3/8" - T.10



**Modular base**

Ordering code

**2630.01**

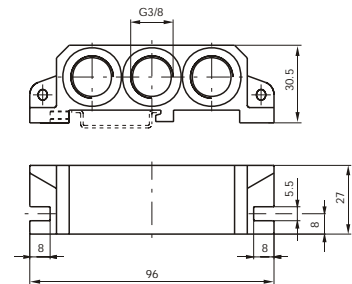


Weight gr. 80

**Right inlet base**

Ordering code

**2630.02**

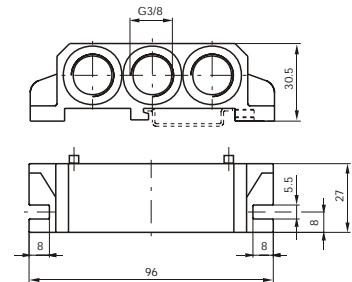


Weight gr. 80

**Left inlet base**

Ordering code

**2630.03**

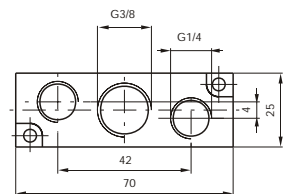


Weight gr. 100

**Intermediate air intake**  
(to be assembled instead of a valve)

Ordering code

**2630.10**

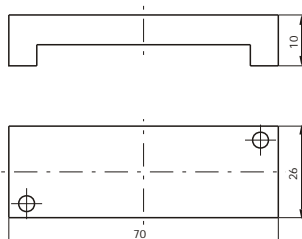


Weight gr. 60

**Closing plate**

Ordering code

**2630.00**



Weight gr. 20

**Diaphragm plug**

Ordering code

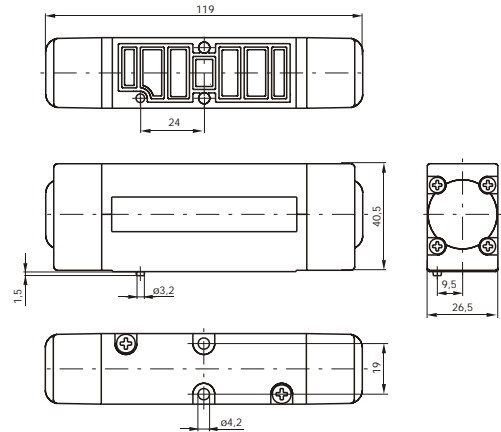
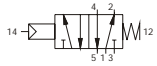
**2630.17**



Weight gr. 5

5/2

**Pneumatic Spring**

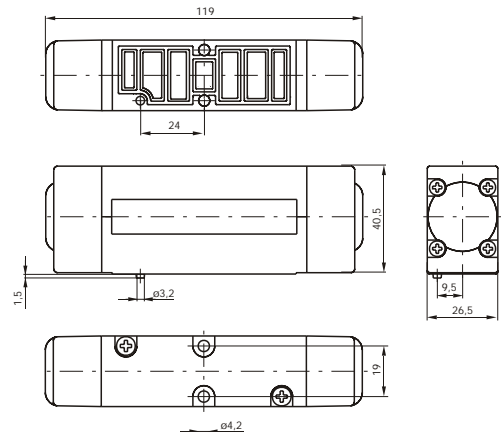
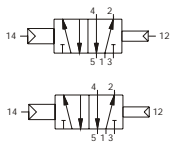


Weight gr. 235

Minimum operating pressure 2 bar

5/2

**Pneumatic Differential**

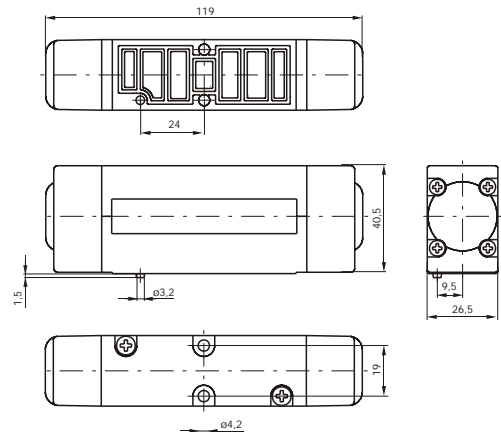


Weight gr. 235

Minimum operating pressure 2 bar

5/2

**Pneumatic Pneumatic**



Weight gr. 255

Minimum operating pressure 1,5 bar

**Ordering codes**

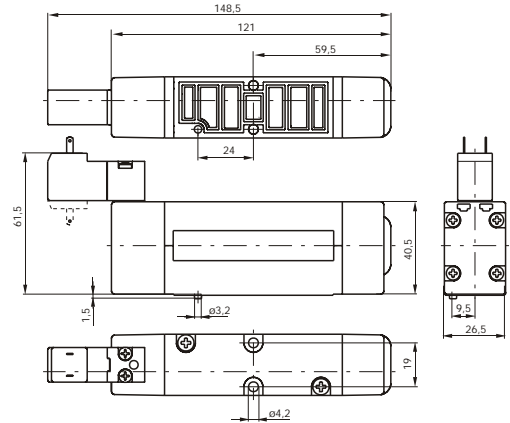
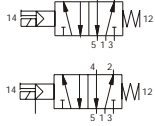
2645 . 52 . 00 .

PILOTING:  
16 = Pneum. - Diff./al.  
17 = Pneum. - Diff./al ext.  
18 = Pneum. - Pneum.  
19 = Pneum. - Spring

Operational characteristics	Fluid	Max working pressure	Operating temperature		Flow rate at 6 bar with $\Delta p = 1$	Orifice size	Working ports size
	Filtered and lubricated or not lubricated air	10 bar	min. -5°C	max. +50°C	1100	$\varnothing 7,5$	/

5/2

**Miniature solenoid  
Spring**

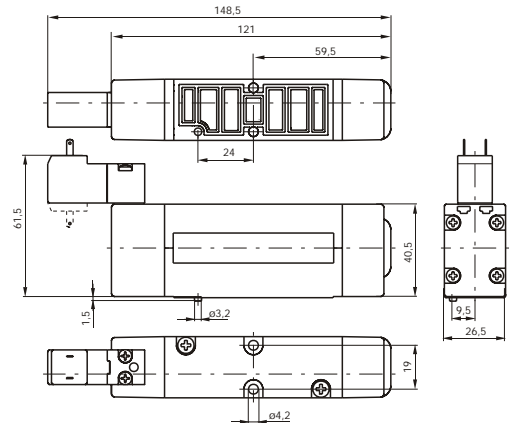
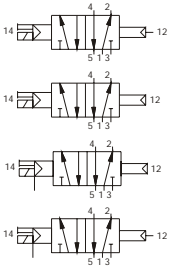


Weight gr. 270

Minimum operating pressure 2 bar

5/2

**Miniature solenoid  
Diff./al**

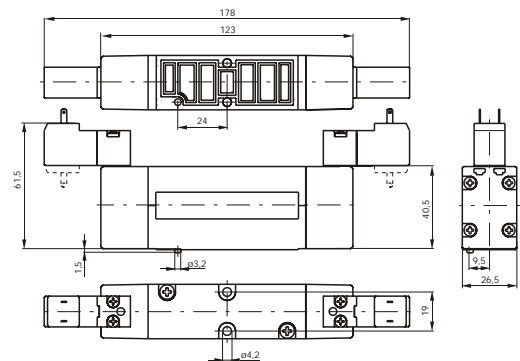
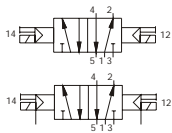


Weight gr. 270

Minimum operating pressure 2 bar

5/2

**Miniature solenoid  
Miniature solenoid**



Weight gr. 305

Minimum operating pressure 1,5 bar

**Ordering codes**

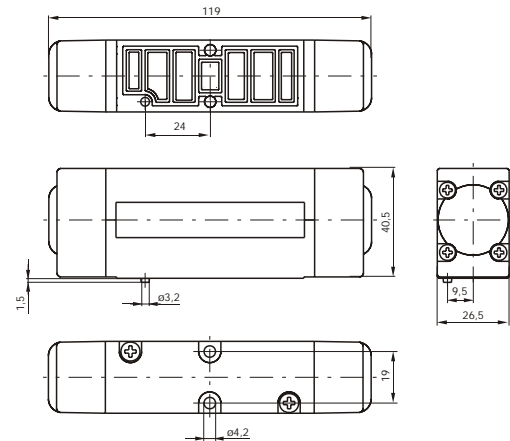
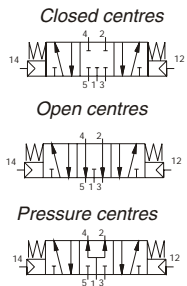
**264 . 52 . 00 . .**

<p><b>TYPE:</b> 1 = Electropilot exhaust on base (only for self feeding valves) 5 = Electropilot exhaust on pilot (for all versions)</p>	<p><b>PILOTING:</b> 24 = Sv. ext. - Sv. ext. 26 = Sv. ext. - Diff./al 27 = Sv. ext. - Diff./al ext. 29 = Sv. ext. - Spring 35 = Sv. - Sv. 36 = Sv. - Diff./al 37 = Sv. - Diff./al ext. 39 = Sv. - Spring</p>	<p><b>VOLTAGE:</b> 01 = Miniature sol. 12 VDC 02 = Miniature sol. 24 VDC 05 = Miniature sol. 24 VAC 06 = Miniature sol. 110 VAC 07 = Miniature sol. 220 VAC 11 = Miniature sol. 12 VDC Downward 12 = Miniature sol. 24 VDC Downward 15 = Miniature sol. 24 VAC Downward 16 = Miniature sol. 110 VAC Downward 17 = Miniature sol. 220 VAC Downward</p>
--	--	---

Operational characteristics	Fluid	Max working pressure	Operating temperature		Flow rate at 6 bar with $\Delta p = 1$	Orifice size	Working ports size
	Filtered and lubricated or not lubricated air	10 bar	min. -5°C	max. +50°C	1100	$\varnothing 7,5$	/

5/3

**Pneumatic  
Pneumatic**

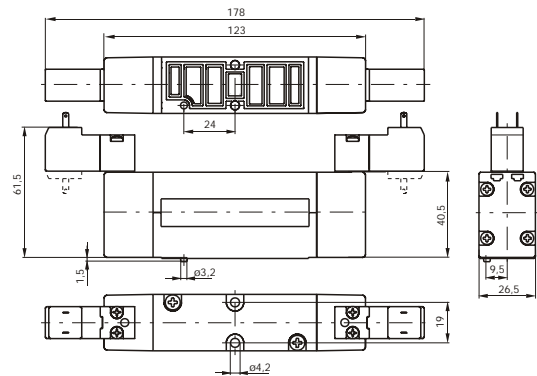
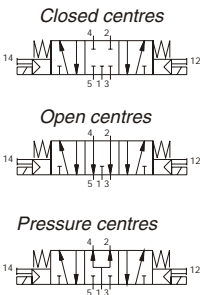


Weight gr. 245

Minimum operating pressure 3 bar

5/3

**Miniature solenoid  
Miniature solenoid**



Weight gr. 315

Minimum operating pressure 3 bar

**Ordering codes**

**264 . 53 . . . .**

**TYPE:**  
1 = Electropilot exhaust on base  
(only for self feeding valves)  
5 = Electropilot exhaust on pilot  
(for all versions)

**PILOTING:**  
18 = Pneum. - Pneum.  
35 = Sv. - Sv.

**FUNCTION:**  
31 = 3 pos. CC  
32 = 3 pos. OC  
33 = 3 pos. PC

**VOLTAGE:**  
01 = Miniature sol. 12 VDC  
02 = Miniature sol. 24 VDC  
05 = Miniature sol. 24 VAC  
06 = Miniature sol. 110 VAC  
07 = Miniature sol. 220 VAC Downward  
12 = Miniature sol. 24 VDC Downward  
15 = Miniature sol. 24 VAC Downward  
16 = Miniature sol. 110 VAC Downward  
17 = Miniature sol. 220 VAC Downward

Operational characteristics	Fluid	Max working pressure	Operating temperature		Flow rate at 6 bar with $\Delta p = 1$	Orifice size	Working ports size
	Filtered and lubricated or not lubricated air	10 bar	min. -5°C	max. +50°C	1000	$\varnothing 7,5$	/

