

Distributors and electro distributors Series 2000

Distributors and electro distributors
size 10 mm LINE

Distributors and electro distributors
size 10 mm FLAT

Distributors and electro distributors
size 10 mm BASE

Integral electrical connections 10,5 pitch

Distributors and electro distributors
size 18 mm LINE

Distributors and electro distributors
size 18 mm FLAT

Distributors and electro distributors
size 18 mm VDMA 24563-02

Integral electrical connections 19mm pitch

Distributors and electro distributors
size 26 mm LINE

Distributors and electro distributors
size 26 mm FLAT

Distributors and electro distributors
size 26 mm VDMA 24563-01



General

The 2000 series solenoid valves have been developed to meet requirements for electronically controlled pneumatic systems and / or serial control systems already used in all manufacturing sectors. They have been designed to be easily assembled into groups or manifolds and include integral electrical connection to facilitate simple and speedy integration into a control system. The series comprises a range of products classified according to type, size and performance. There are three main sizes, 10mm., 18 mm. and 26 mm., with each size further divided into 3 types "LINE", "FLAT" and "VDMA" or "BASE".

The 10mm. and 18 mm. 24 VDC range of valves includes a range of accessories for the production of manifolded valve assemblies with integral electrical connections. Modules are available in two or four station variants for flexibility and are supplied to IP40 or alternatively IP65 environmental protection.

Construction characteristics

	2100	2400	2600
Central body	Extruded aluminium bar with chemical nickel treatment and PTFE (polytetrafluorethylene)		
Connection plates	Technopolymer	Zincalloy	Die-cast aluminium
Operators	Technopolymer		
Spool	Aluminium 2011		
Piston seals	Oil resistant nitrile rubber - NBR		
Spool seals	Oil resistant nitrile rubber - HNBR (Therban)		
Springs	Stainless steel AISI 302		
Piston	Aluminium 2011	Technopolymer	

Use and maintenance

The average life of the valve exceeds 50.000.000 cycles when used under optimum conditions. Adequate lubrication reduces seals wear, just as proper filtering of supply air prevents the build-up of dirt that can cause malfunction. Ensure the valve is used within our recommended criteria for pressure and temperature. In dirty or dusty environments, the exhaust ports should be protected. A seal kit including the spool is available for overhauling the valve. This operation does not require a skilled worker, although a particular care should be taken when reassembling the valve.

Ordering codes for miniature solenoid valves

Series 2100

The 10 mm. miniature solenoid valve with 0,7 mm. orifice has been selected for piloting this series of valves (see Series 300, section 1). This results in low response times and reduced power consumption. The valve can be supplied with the coil upward or downward depending on the application.

Codes are as follows:

Coil upward code

01 = miniature sol. 12 VDC 90°conn. with led
 21 = miniature sol. 12 VDC line conn. with led
 02 = miniature sol. 24 VDC 90°conn. with led
 22 = miniature sol. 24 VDC line conn. with led

Coil downward code

11 = miniature sol. 12 VDC 90° conn. with led
 31 = miniature sol. 12 VDC line conn. with led
 12 = miniature sol. 24 VDC 90°conn. with led
 32 = miniature sol. 24 VDC line conn. with led
 91 = miniature sol. 12 VDC for integral electrical connections
 92 = miniature sol. 24 VDC for integral electrical connections

Series 2400/2600

The 15 mm miniature solenoid valve with 1,1 mm. orifice has been selected for piloting this series of valves (see Series 300, section 1). This results in low response times and reduced power consumption. The valve can be supplied with the coil upward or downward depending on the application.

Codes are as follows :

Coil upward code

01 = miniature sol. 12 VDC
 02 = miniature sol. 24 VDC
 05 = miniature sol. 24 VAC
 06 = miniature sol. 110 VAC
 07 = miniature sol. 220 VAC

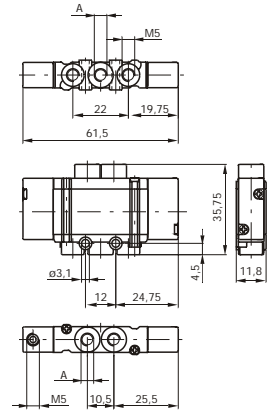
Coil downward code

11 = miniature sol. 12 VDC
 12 = miniature sol. 24 VDC
 15 = miniature sol. 24 VAC
 16 = miniature sol. 110 VAC
 17 = miniature sol. 220 VAC

Miniature solenoid  homologated are available (see page 1.26).

5/2

Pneumatic Spring



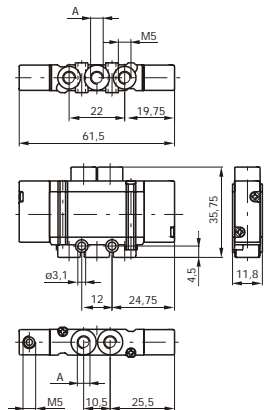
Weight gr. 30

Minimum operating pressure 2 bar

For dimension 'A'
see ordering code

5/2

Pneumatic Differential



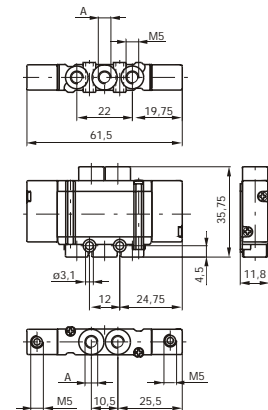
Weight gr. 28

Minimum operating pressure 2 bar

For dimension 'A'
see ordering code

5/2

Pneumatic Pneumatic



Weight gr. 30

Minimum operating pressure 1,5 bar

For dimension 'A'
see ordering code

Ordering codes

211 . 52 . 00 . _ _

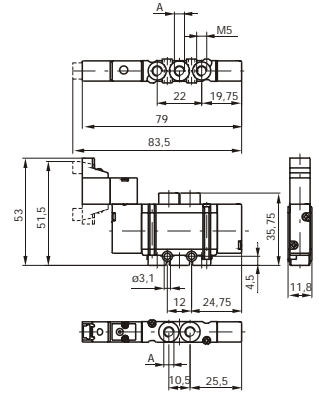
TYPE:
5 = Connection 'A' = M5
7 = Connection 'A' = M7x1

PILOTING:
16 = Pneum. - Diff./al
18 = Pneum. - Pneum.
19 = Pneum. - Spring

Operational characteristics	Fluid	Max working pressure	Operating temperature		Flow rate at 6 bar with $\Delta p = 1$	Orifice size	Working ports size
	Filtered and lubricated or not lubricated air	7 bar	min. -5° C	max. +50° C	250 NI/min	ø 2,5	M5 - M7

5/2

**Miniature solenoid
Spring**



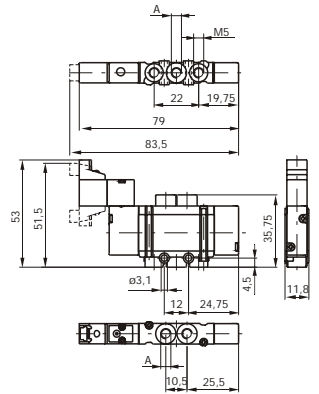
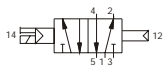
Weight gr. 42

Minimum operating pressure 2 bar

For dimension 'A'
see ordering code

5/2

**Miniature solenoid
Differential**



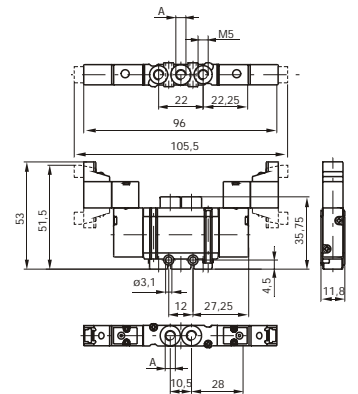
Weight gr. 40

Minimum operating pressure 2 bar

For dimension 'A'
see ordering code

5/2

**Miniature solenoid
Miniature solenoid**



Weight gr. 52

Minimum operating pressure 1,5 bar

For dimension 'A'
see ordering code

Ordering codes

211 . 52 . 00

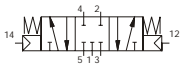
<p>TYPE: 5 = Connection 'A' = M5 7 = Connection 'A' = M7x1</p>	<p>PILOTING: 35 = Sv. - Sv 36 = Sv. - Diff./al 39 = Sv. - Spring</p>	<p>VOLTAGE: 01 = miniature sol. 12 VDC 90°conn. with led 21 = miniature sol. 12 VDC line conn. with led 02 = miniature sol. 24 VDC 90°conn. with led 22 = miniature sol. 24 VDC line conn. with led 11 = miniature sol. 12 VDC 90° conn. with led downward 31 = miniature sol. 12 VDC line conn. with led downward 12 = miniature sol. 24 VDC 90°conn. with led downward 32 = miniature sol. 24 VDC line conn. with led downward</p>
---	---	---

Operational characteristics	Fluid	Max working pressure	Operating temperature		Flow rate at 6 bar with Δ p = 1	Orifice size	Working ports size
	Filtered and lubricated or not lubricated air	7 bar	min. -5° C	max. +50° C	250 NI/min	ø 2,5	M5 - M7

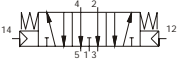
5/3

**Pneumatic
Pneumatic**

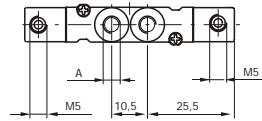
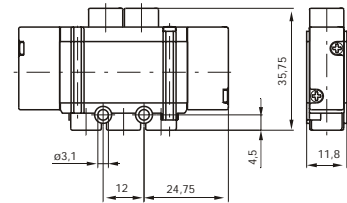
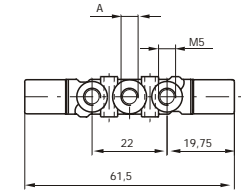
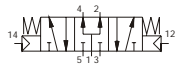
Closed centres



Open centres



Pressure centres



Weight gr. 32

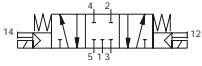
Minimum operating pressure 2,5 bar

For dimension 'A'
see ordering code

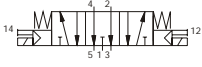
5/3

**Miniature solenoid
Miniature solenoid**

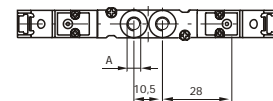
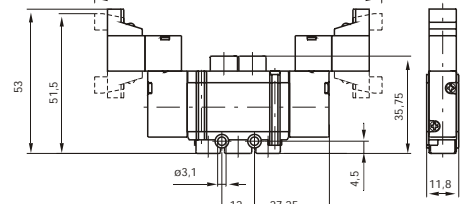
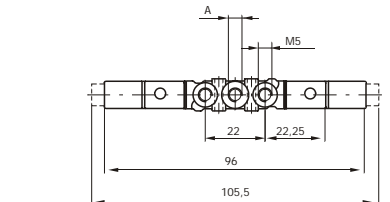
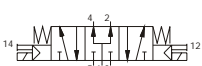
Closed centres



Open centres



Pressure centres



Weight gr. 54

Minimum operating pressure 2,5 bar

For dimension 'A'
see ordering code

Ordering code

211 . 53

TYPE:
5 = Connection 'A' = M5
7 = Connection 'A' = M7x1

FUNCTION:
31 = 3 pos. CC
32 = 3 pos. OC
33 = 3 pos. PC

PILOTING:
18 = Pneum. - Pneum.
35 = Sv. - sv.

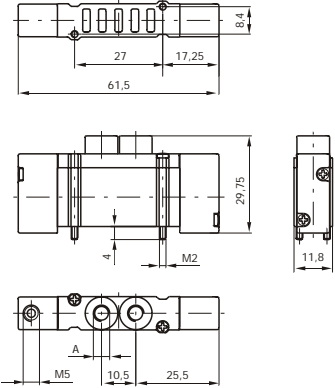
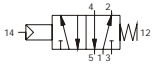
VOLTAGE:
01 = miniature sol. 12 VDC 90°conn. with led
21 = miniature sol. 12 VDC line conn. with led
02 = miniature sol. 24 VDC 90°conn. with led
22 = miniature sol. 24 VDC line conn. with led
11 = miniature sol. 12 VDC 90° conn. with led downward
31 = miniature sol. 12 VDC line conn. with led downward
12 = miniature sol. 24 VDC 90°conn. with led downward
32 = miniature sol. 24 VDC line conn. with led downward

Operational characteristics	Fluid	Max working pressure	Operating temperature		Flow rate at 6 bar with $\Delta p = 1$	Orifice size	Working ports size
	Filtered and lubricated or not lubricated air	7 bar	min. -5° C	max. +50° C	180 NI/min	\varnothing 2,5	M5 - M7



5/2

Pneumatic Spring



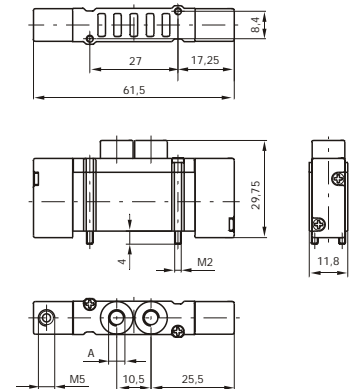
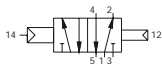
Weight gr. 32

Minimum operating pressure 2 bar

For dimension 'A'
see ordering code

5/2

Pneumatic Differential



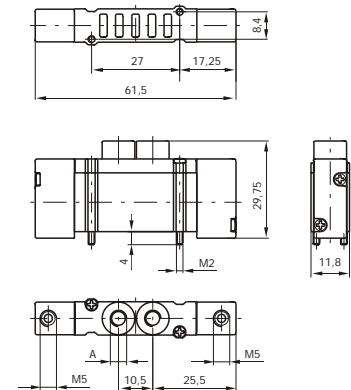
Weight gr. 30

Minimum operating pressure 2 bar

For dimension 'A'
see ordering code

5/2

Pneumatic Pneumatic



Weight gr. 32

Minimum operating pressure 1,5 bar

For dimension 'A'
see ordering code

Ordering codes

213 . 52 . 00 .

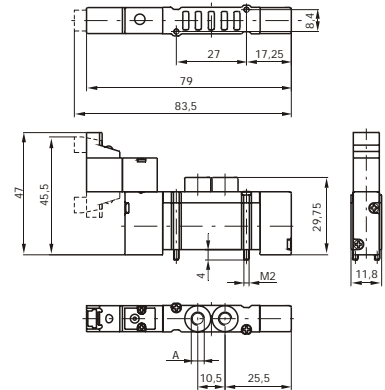
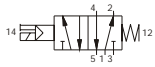
TYPE:
5 = Connection 'A' = M5
7 = Connection 'A' = M7x1

PILOTING:
16 = Pneum. - Diff./al
18 = Pneum. - Pneum.
19 = Pneum. - Spring

Operational characteristics	Fluid	Max working pressure	Operating temperature		Flow rate at 6 bar with $\Delta p = 1$	Orifice size	Working ports size
	Filtered and lubricated or not lubricated air	7 bar	min. -5° C	max. +50° C	250 NI/min	$\varnothing 2,5$	M5 - M7

5/2

**Miniature solenoid
Spring**



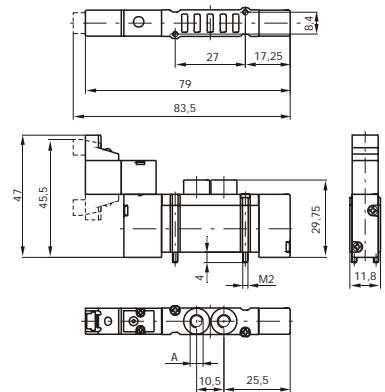
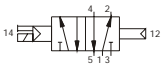
Weight gr. 38

Minimum operating pressure 2 bar

For dimension 'A'
see ordering code

5/2

**Miniature solenoid
Differential**



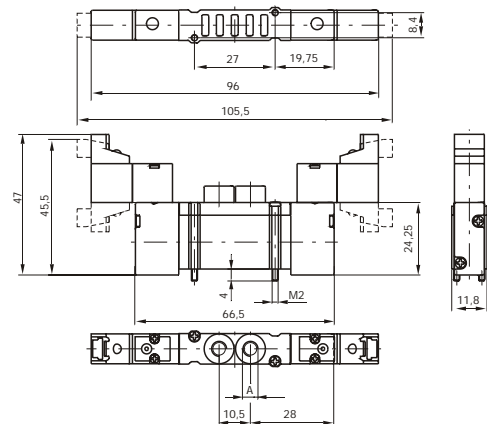
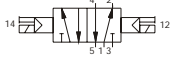
Weight gr. 36

Minimum operating pressure 2 bar

For dimension 'A'
see ordering code

5/2

**Miniature solenoid
Miniature solenoid**



Weight gr. 50

Minimum operating pressure 1,5 bar

For dimension 'A'
see ordering code

Ordering codes

213 . 52 . 00 .

TYPE:

- 5 = Connection 'A' = M5
- 7 = Connection 'A' = M7x1

PILOTING:

- 35 = Sv. - sv.
- 36 = Sv. - diff./al
- 39 = Sv. - spring

VOLTAGE:

- 01 = miniature sol. 12 VDC 90°conn. with led
- 21 = miniature sol. 12 VDC line conn. with led
- 02 = miniature sol. 24 VDC 90°conn. with led
- 22 = miniature sol. 24 VDC line conn. with led
- 11 = miniature sol. 12 VDC 90° conn. with led downward
- 31 = miniature sol. 12 VDC line conn. with led downward
- 12 = miniature sol. 24 VDC 90°conn. with led downward
- 32 = miniature sol. 24 VDC line conn. with led downward
- 91 = miniature sol. 12 VDC for integral electrical connections downward
- 92 = miniature sol. 24 VDC for integral electrical connections downward

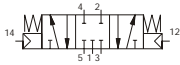
Operational characteristics	Fluid	Max working pressure	Operating temperature		Flow rate at 6 bar with $\Delta p = 1$	Orifice size	Working ports size
	Filtered and lubricated or not lubricated air	7 bar	min. -5° C	max. +50° C	250 NI/min	ø 2,5	M5 - M7



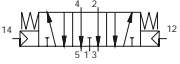
5/3

**Pneumatic
Pneumatic**

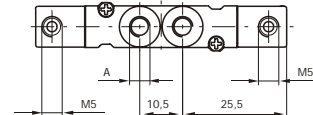
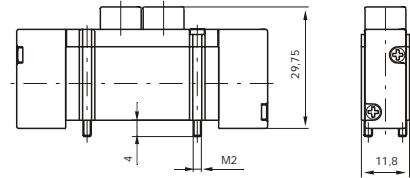
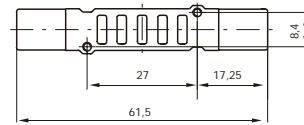
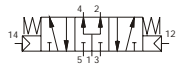
Closed centres



Open centres



Pressure centres



Weight gr. 28

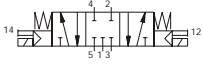
Minimum operating pressure 2,5 bar

For dimension 'A'
see ordering code

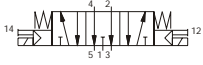
5/3

**Miniature solenoid
Miniature solenoid**

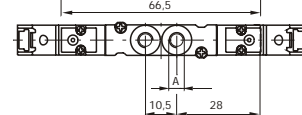
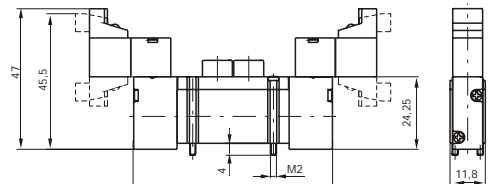
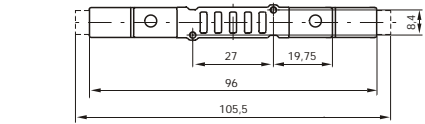
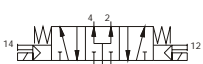
Closed centres



Open centres



Pressure centres



Weight gr. 52

Minimum operating pressure 2,5 bar

For dimension 'A'
see ordering code

Ordering code

213 . 53

TYPE:
5 = Connection 'A' = M5
7 = Connection 'A' = M7x1

FUNCTION:
31 = 3 pos. CC
32 = 3 pos. OC
33 = 3 pos. PC

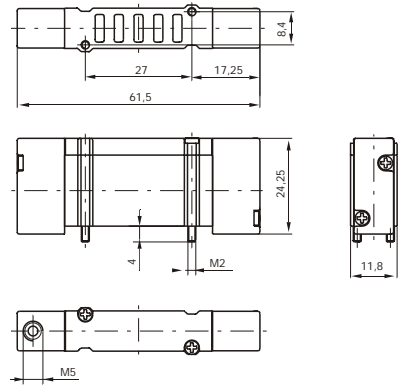
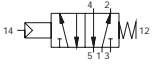
PILOTING:
18 = Pneum. - Pneum.
35 = Sv. - sv.

VOLTAGE:
01 = miniature sol. 12 VDC 90°conn. with led
21 = miniature sol. 12 VDC line conn. with led
02 = miniature sol. 24 VDC 90°conn. with led
22 = miniature sol. 24 VDC line conn. with led
11 = miniature sol. 12 VDC 90° conn. with led downward
31 = miniature sol. 12 VDC line conn. with led downward
12 = miniature sol. 24 VDC 90°conn. with led downward
32 = miniature sol. 24 VDC line conn. with led downward
91 = miniature sol. 12 VDC for integral electrical connections downward
92 = miniature sol. 24 VDC for integral electrical connections downward

Operational characteristics	Fluid	Max working pressure	Operating temperature		Flow rate at 6 bar with Δ p = 1	Orifice size	Working ports size
	Filtered and lubricated or not lubricated air	7 bar	min. -5° C	max. +50° C	180 NI/min	ø 2,5	M5 - M7

5/2

Pneumatic Spring

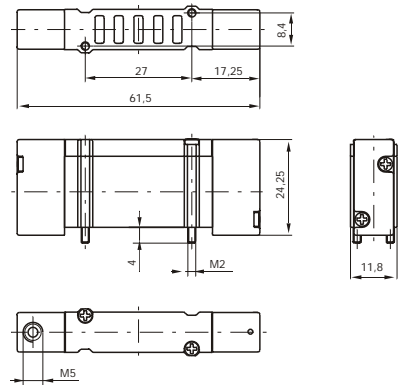


Weight gr. 24

Minimum operating pressure 2 bar

5/2

Pneumatic Differential

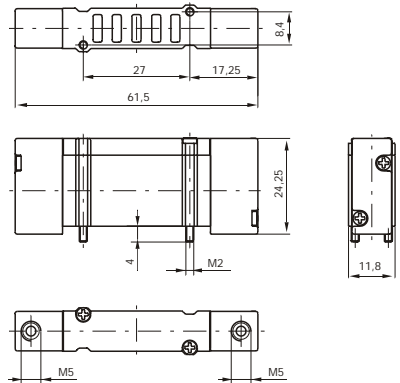
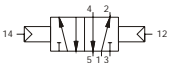


Weight gr. 22

Minimum operating pressure 2 bar

5/2

Pneumatic Pneumatic



Weight gr. 26

Minimum operating pressure 1,5 bar

Ordering codes

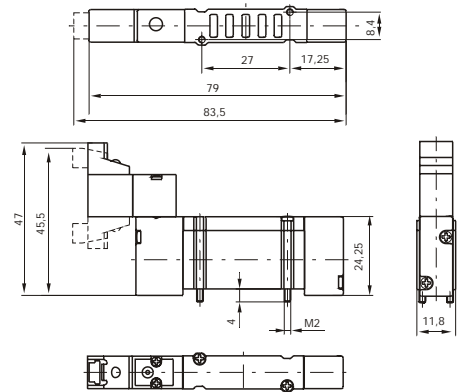
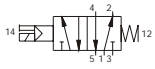
2141 . 52 . 00 .

PILOTING:
16 = Pneum. - diff./al
18 = Pneum. - pneum.
19 = Pneum. - spring

Operational characteristics	Fluid	Max working pressure	Operating temperature		Flow rate at 6 bar with $\Delta p = 1$	Orifice size	Working ports size
	Filtered and lubricated or not lubricated air	7 bar	min. -5° C	max. +50° C	250 Nl/min	\varnothing 2,5	/

5/2

**Miniature solenoid
Spring**

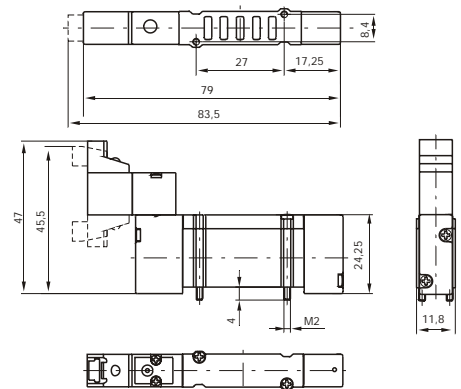
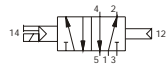


Weight gr. 38

Minimum operating pressure 2 bar

5/2

**Miniature solenoid
Differential**

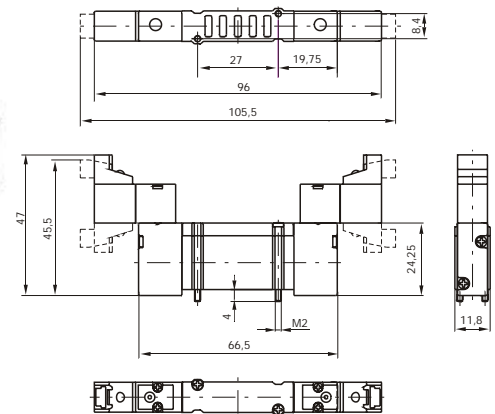


Weight gr. 36

Minimum operating pressure 2 bar

5/2

**Miniature solenoid
Miniature solenoid**



Weight gr. 48

Minimum operating pressure 1,5 bar

Ordering codes

2141 . 52 . 00

PILOTING:
35 = Sv. - sv.
36 = Sv. - diff./al
39 = Sv. - spring

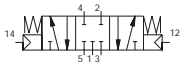
VOLTAGE:
01 = miniature sol. 12 VDC 90°conn. with led
21 = miniature sol. 12 VDC line conn. with led
02 = miniature sol. 24 VDC 90°conn. with led
22 = miniature sol. 24 VDC line conn. with led
11 = miniature sol. 12 VDC 90° conn. with led downward
31 = miniature sol. 12 VDC line conn. with led downward
12 = miniature sol. 24 VDC 90°conn. with led downward
32 = miniature sol. 24 VDC line conn. with led downward
91 = miniature sol. 12 VDC for integral electrical connections downward
92 = miniature sol. 24 VDC for integral electrical connections downward

Operational characteristics	Fluid	Max working pressure	Operating temperature		Flow rate at 6 bar with $\Delta p = 1$	Orifice size	Working ports size
	Filtered and lubricated or not lubricated air	7 bar	min. -5° C	max. +50° C	250 NI/min	\varnothing 2,5	/

5/3

**Pneumatic
Pneumatic**

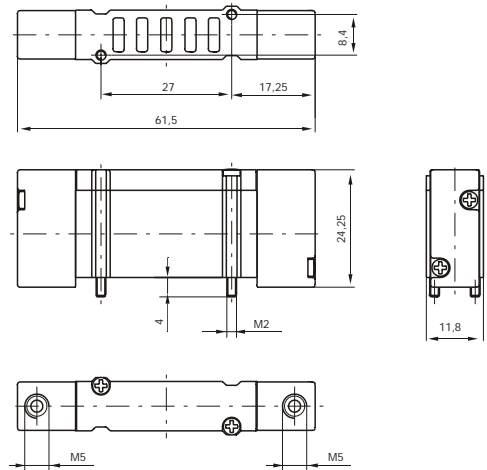
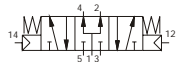
Closed centres



Open centres



Pressure centres



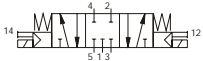
Weight gr. 28

Minimum operating pressure 2,5 bar

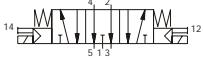
5/3

**Miniature solenoid
Miniature solenoid**

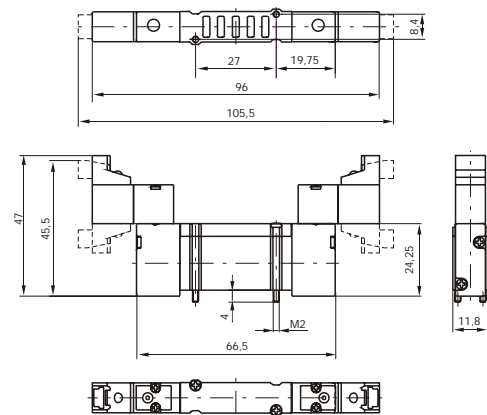
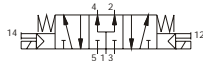
Closed centres



Open centres



Pressure centres



Weight gr. 50

Minimum operating pressure 2,5 bar

Ordering code

2141. 53

FUNCTION:
31 = 3 pos. CC
32 = 3 pos. OC
33 = 3 pos. PC

PILOTING:
18 = Pneum. - Pneum.
35 = Sv. - sv.

VOLTAGE:
01 = miniature sol. 12 VDC 90°conn. with led
21 = miniature sol. 12 VDC line conn. with led
02 = miniature sol. 24 VDC 90°conn. with led
22 = miniature sol. 24 VDC line conn. with led
11 = miniature sol. 12 VDC 90° conn. with led downward
31 = miniature sol. 12 VDC line conn. with led downward
12 = miniature sol. 24 VDC 90°conn. with led downward
32 = miniature sol. 24 VDC line conn. with led downward
91 = miniature sol. 12 VDC for integral electrical connections downward
92 = miniature sol. 24 VDC for integral electrical connections downward

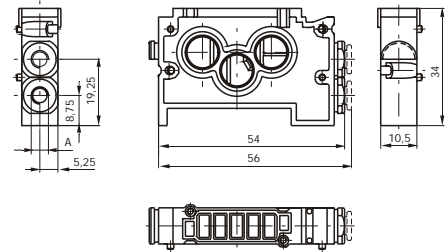
Operational characteristics	Fluid	Max working pressure	Operating temperature		Flow rate at 6 bar with $\Delta p = 1$	Orifice size	Working ports size
	Filtered and lubricated or not lubricated air	7 bar	min. -5° C	max. +50° C	180 NI/min	\varnothing 2,5	/

Modular base for "BASE" version

Ordering code

214 .01

- 0 = modular BASE without cartridges
- 4 = modular BASE c/w with 4 mm tube cartridges
- 5 = modular BASE c/w with M5 cartridges
- 6 = modular BASE c/w with 6mm tube cartridges
- 7 = modular BASE c/w with M7x1 cartridges

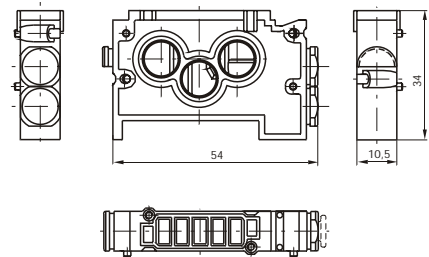


Weight gr. 22

Modular base for "FLAT" version

Ordering code

2130.01

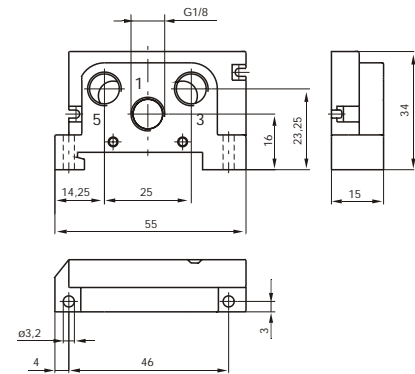


Weight gr. 28

Right inlet base

Ordering code

2140.02

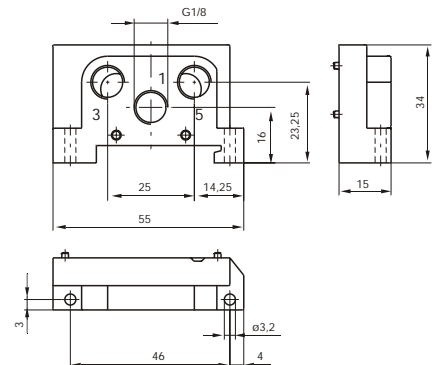


Weight gr. 18

Left inlet base

Ordering code

2140.03



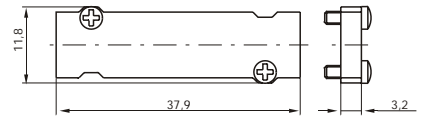
Weight gr. 18



Closing plate

Ordering code

2130.00



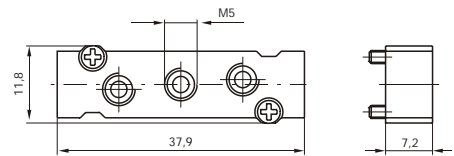
Weight gr. 7

Intermediate air intake

(to be assembled instead of a valve)

Ordering code

2130.10



Weight gr. 12

Modulare base cartridge

Ordering code

2100.

- 031M = 4 mm tube cartridge
- 033M = M5 cartridge
- 034M = M7x1 cartridge
- 035M = lock cartridge
- 036M = 6mm tube cartridge

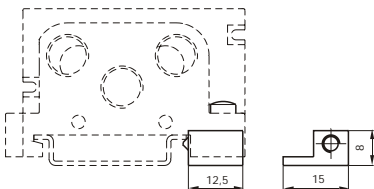


Weight gr. 6

DIN rail adapter

Ordering code

2130.16



Weight gr. 5

Diaphragm plug

Ordering code

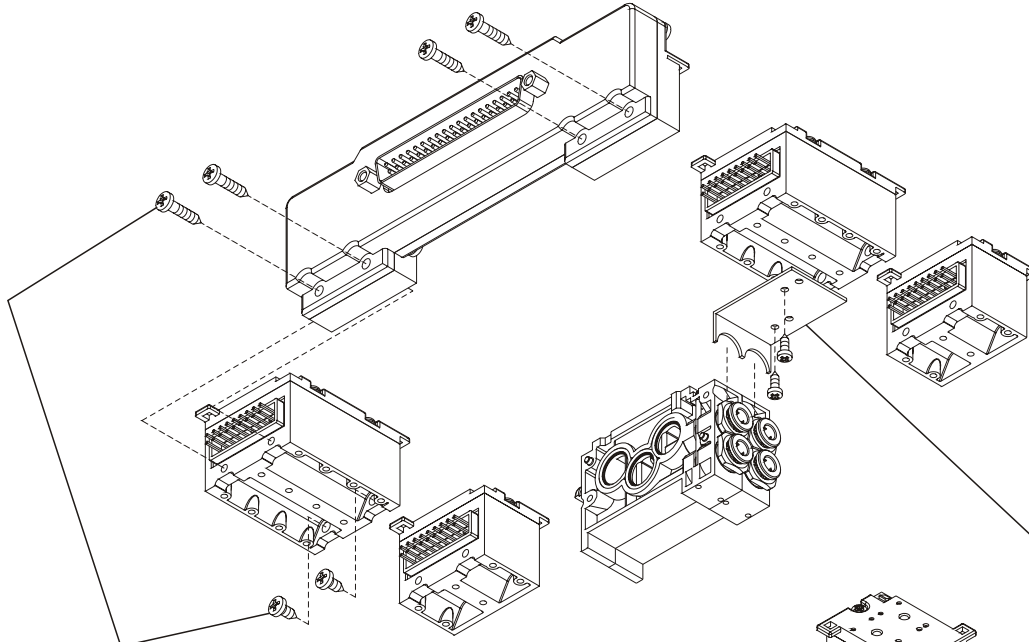
2130.17



Weight gr. 6

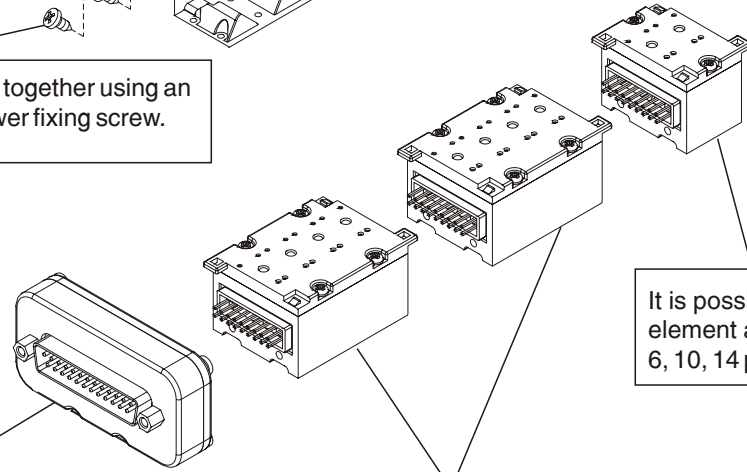
The integral electrical design for the series 2400 valve is extremely flexible, allowing the production of pre-wired solenoid valve manifolds, the configuration of which can be determined at the point of assembly. The 24 VDC, 12 VDC (equivalent PNP) modules are available with 2 or 4 positions. The system assembled is designed for an IP40 - IP65 protection.

Coil type 91 or 92 is required for the multipin electrical connection (see valve ordering codes).



The elements connect together using an upper coupling and lower fixing screw.

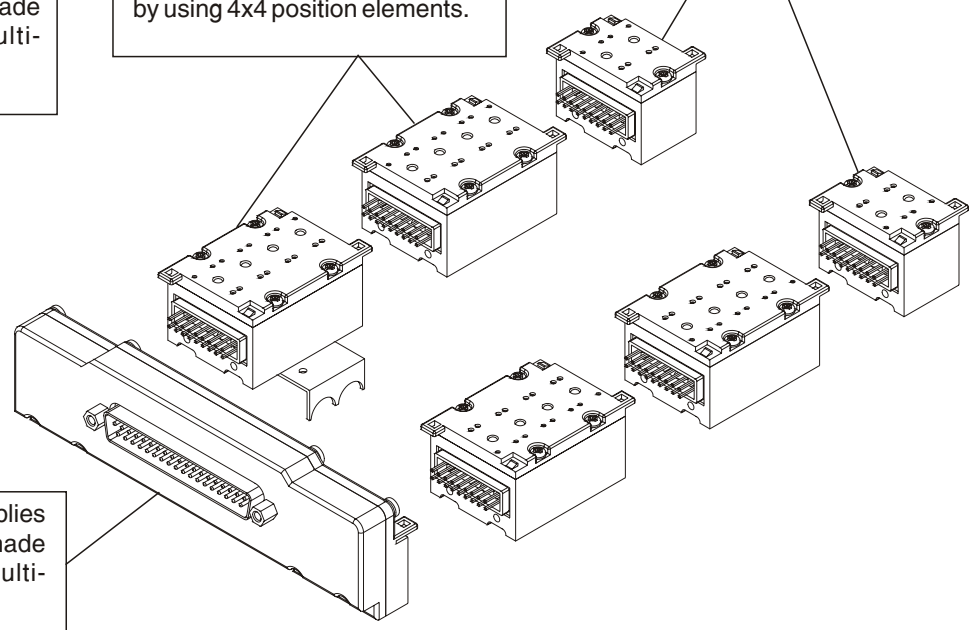
Support plates are supplied to mount the electrical connection elements to the manifold modules. Individual valves can still be removed from the manifold even after assembly is complete. One support plate is required per element.



It is possible to use the 2 position element as the first terminal on 2, 6, 10, 14 position assemblies.







On single solenoid assemblies electrical connection is made using an SUB-D 25 multi-connector.

Up to 16 valves can be operated by using 4x4 position elements.



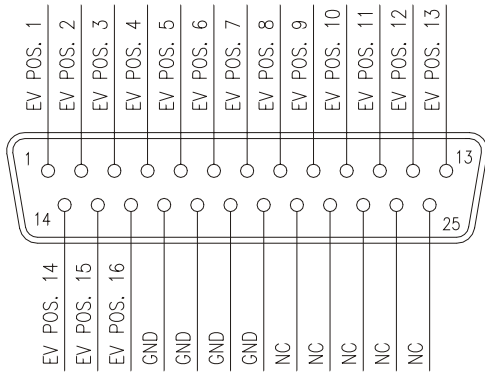
On double solenoid assemblies electrical connection is made using a SUB-D 37 multi-connector.



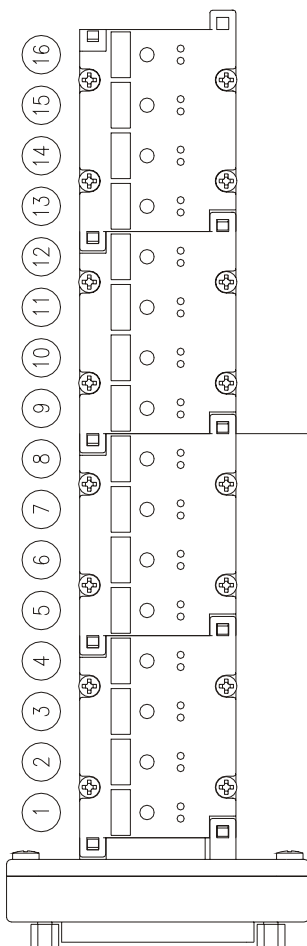
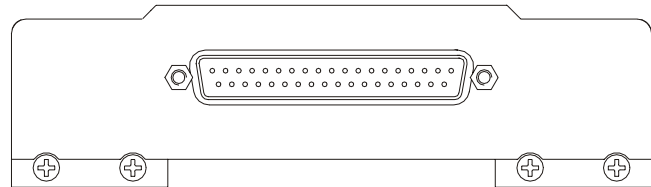
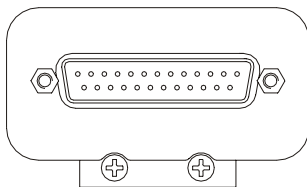
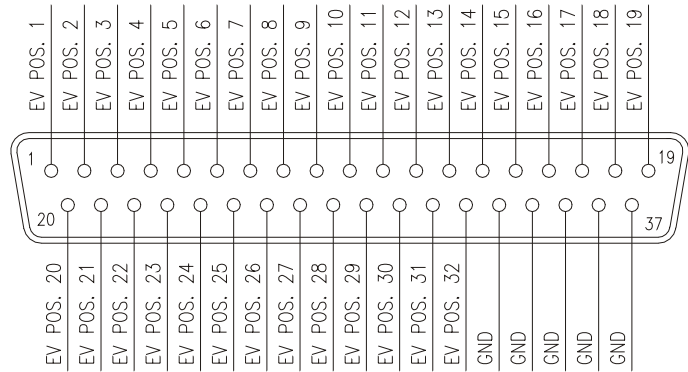
<p>4 positions module</p> <hr/> <p>Ordering code</p> <hr/> <p>2100 . 04 .</p>  <div data-bbox="129 488 588 678" style="border: 1px solid black; padding: 5px;"> <p>TYPE: 00 = (module 4 pos. Left IP40 - PNP) 01 = (module 4 pos. Right IP40 - PNP) 02 = (module 4 pos. Left IP40 with protection diode - PNP) 03 = (module 4 pos. Right IP40 with protection diode - PNP) 10 = (module 4 pos. Left IP65 - PNP) 11 = (module 4 pos. Right IP65 - PNP) 12 = (module 4 pos. Left IP65 with protection diode - PNP) 13 = (module 4 pos. Right IP65 with protection diode - PNP)</p> </div> <p>Weight gr. 35</p>	<p>2 positions module</p> <hr/> <p>Ordering code</p> <hr/> <p>2100 . 02 .</p>  <div data-bbox="834 472 1307 663" style="border: 1px solid black; padding: 5px;"> <p>TYPE: 00 = (module 2 pos. Left IP40 - PNP) 01 = (module 2 pos. Right IP40 - PNP) 02 = (module 2 pos. Left IP40 with protection diode - PNP) 03 = (module 2 pos. Right IP40 with protection diode - PNP) 10 = (module 2 pos. Left IP65 - PNP) 11 = (module 2 pos. Right IP65 - PNP) 12 = (module 2 pos. Left IP65 with protection diode - PNP) 13 = (module 2 pos. Right IP65 with protection diode - PNP)</p> </div> <p>Weight gr. 20</p>
<p>37 contacts front connector IP65</p> <hr/> <p>Ordering code</p> <hr/> <p>2100 . 37 . 10</p>  <p>Note: The IP65 protection is obtained by IP65 Pneumax cable. Weight gr. 120</p>	<p>25 contacts connector IP65</p> <hr/> <p>Ordering code</p> <hr/> <p>2100 . 25 . 10</p>  <p>Note: The IP65 protection is obtained by IP65 Pneumax cable. Weight gr. 40</p>
<p>Plug</p> <hr/> <p>Ordering code</p> <hr/> <p>2100.00</p>  <p>Weight gr. 4</p>	<p>Cable c/w connector mobile positioning</p> <hr/> <p>Ordering code</p> <hr/> <p>2400</p> <div data-bbox="826 1417 1385 1507" style="display: flex; justify-content: space-around;"> <div style="border: 1px solid black; padding: 5px;"> <p>CONNECTOR TYPE 25 = 25 contacts 37 = 37 contacts</p> </div> <div style="border: 1px solid black; padding: 5px;"> <p>CABLE LENGTH 03 = 3 meters 05 = 5 meters 10 = 10 meters</p> </div> <div style="border: 1px solid black; padding: 5px;"> <p>00 = connector IP40 10 = connector IP65 (with protection device)</p> </div> </div>
<p>FLAT support plate</p> <hr/> <p>Ordering code</p> <hr/> <p>2130.50</p>  <p>Weight gr. 5</p>	



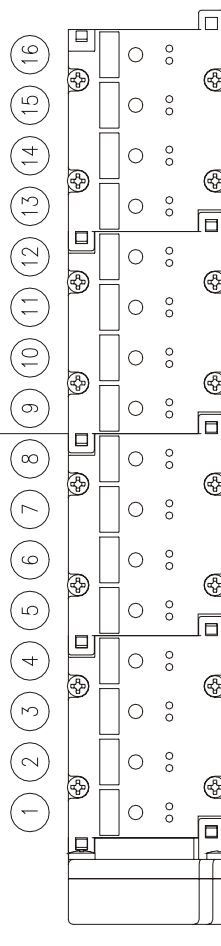
SUB-D 25 CONTACTS CONNECTOR



SUB-D 37 CONTACTS CONNECTOR



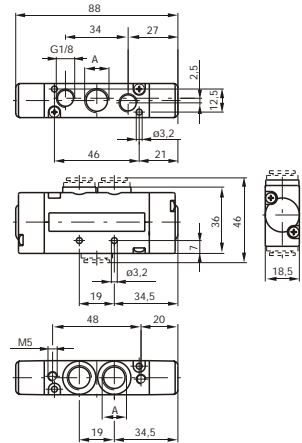
Left modules



Right modules

5/2

Pneumatic Spring



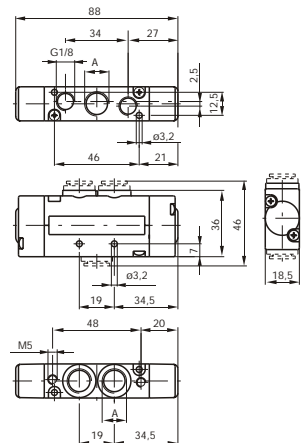
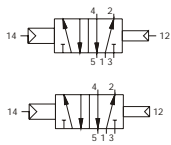
Weight gr. 155

Minimum operating pressure 2 bar

For dimension 'A'
see ordering code

5/2

Pneumatic Differential



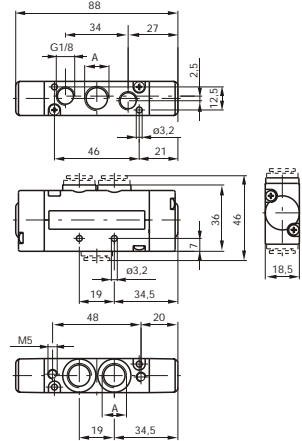
Weight gr. 155

Minimum operating pressure 2 bar

For dimension 'A'
see ordering code

5/2

Pneumatic Pneumatic



Weight gr. 155

Minimum operating pressure 1,5 bar

For dimension 'A'
see ordering code

Ordering codes

241 . 52 . 00 .

TYPE:
1 = Connection 'A' = G 1/4"
5 = Connection 'A' = G 1/8"
6 = Connection 'A' = Quick fitting, tube ø 6
8 = Connection 'A' = Quick fitting, tube ø 8

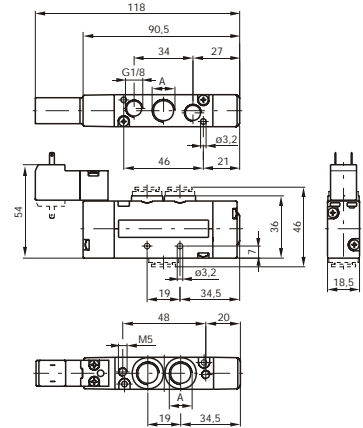
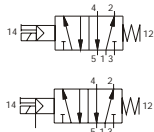
PILOTING:
16 = Pneum. - Diff./al
17 = Pneum. - Diff./al ext.
18 = Pneum. - Pneum.
19 = Pneum. - Spring

Operational characteristics	Fluid	Max working pressure	Operating temperature		Flow rate at 6 bar with $\Delta p = 1$	Orifice size	Working ports size
	Filtered and lubricated or not lubricated air	10 bar	min. -5°C	max. +50°C	800 NI/min	ø 7	G1/8" - G1/4" - T.8



5/2

**Miniature solenoid
Spring**



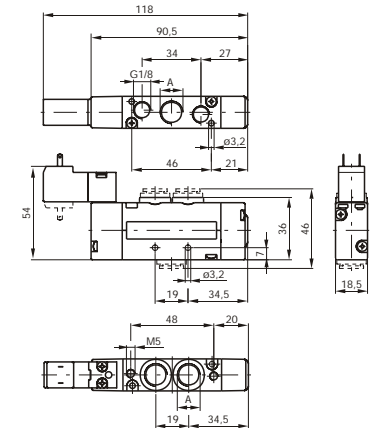
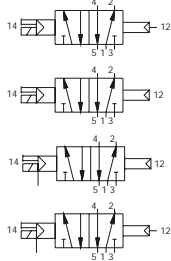
Weight gr. 195

Minimum operating pressure 2 bar

For dimension 'A'
see ordering code

5/2

**Miniature solenoid
Diff./al**



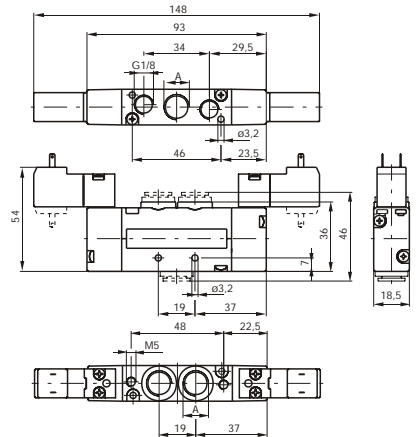
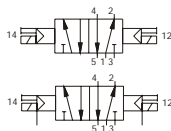
Weight gr. 195

Minimum operating pressure 2 bar

For dimension 'A'
see ordering code

5/2

**Miniature solenoid
Miniature solenoid**



Weight gr. 225

Minimum operating pressure 1,5 bar

For dimension 'A'
see ordering code

Ordering codes

241 . 52 . 00 . . .

TYPE:
1 = Connection 'A' = G 1/4"
5 = Connection 'A' = G 1/8"
6 = Connection 'A' = Quick fitting, tube ø 6
8 = Connection 'A' = Quick fitting, tube ø 8

PILOTING:
24 = Sv. ext. - Sv. ext.
26 = Sv. ext. - Diff./al
27 = Sv. ext. - Diff./al ext.
29 = Sv. ext. - Spring
35 = Sv. - Sv
36 = Sv. - Diff./al
37 = Sv. - Diff./al ext.
39 = Sv. - Spring

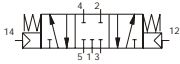
VOLTAGE:
01 = Miniature sol. 12 VDC
02 = Miniature sol. 24 VDC
05 = Miniature sol. 24 VAC
06 = Miniature sol. 110 VAC
07 = Miniature sol. 220 VAC
11 = Miniature sol. 12 VDC Downward
12 = Miniature sol. 24 VDC Downward
15 = Miniature sol. 24 VAC Downward
16 = Miniature sol. 110 VAC Downward
17 = Miniature sol. 220 VAC Downward

Operational characteristics	Fluid	Max working pressure	Operating temperature		Flow rate at 6 bar with Δ p = 1	Orifice size	Working ports size
	Filtered and lubricated or not lubricated air	10 bar	min. -5°C	max. +50°C	800 NI/min	ø 7	G1/8" - G1/4" - T.8

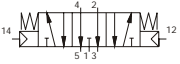
5/3

**Pneumatic
Pneumatic**

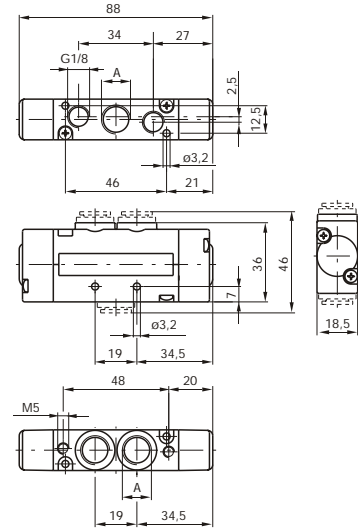
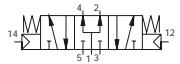
Closed centres



Open centres



Pressure centres



Weight gr. 165

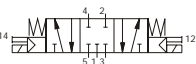
Minimum operating pressure 3 bar

For dimension 'A'
see ordering code

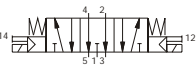
5/3

**Miniature solenoid
Miniature solenoid**

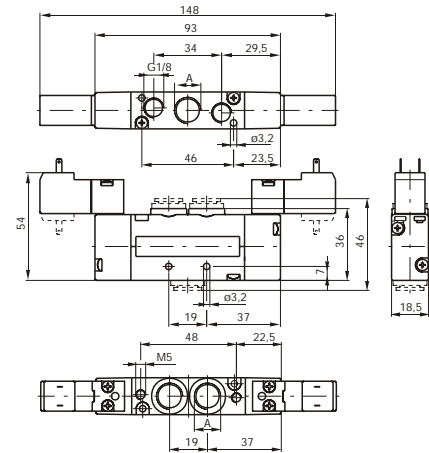
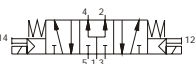
Closed centres



Open centres



Pressure centres



Weight gr. 235

Minimum operating pressure 3 bar

For dimension 'A'
see ordering code

Ordering codes

241 . 53

TYPE:
1 = Connection 'A' = G 1/4"
5 = Connection 'A' = G 1/8"
6 = Connection 'A' = Quick fitting, tube ø 6
8 = Connection 'A' = Quick fitting, tube ø 8

PILOTING:
18 = Pneum. - Pneum.
35 = Sv. - Sv.

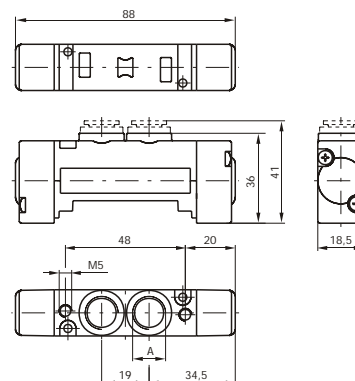
FUNCTION:
31 = 3 pos. CC
32 = 3 pos. OC
33 = 3 pos. PC

VOLTAGE:
01 = Miniature sol. 12 VDC
02 = Miniature sol. 24 VDC
05 = Miniature sol. 24 VAC
06 = Miniature sol. 110 VAC
07 = Miniature sol. 220 VAC
11 = Miniature sol. 12 VDC Downward
12 = Miniature sol. 24 VDC Downward
15 = Miniature sol. 24 VAC Downward
16 = Miniature sol. 110 VAC Downward
17 = Miniature sol. 220 VAC Downward

Operational characteristics	Fluid	Max working pressure	Operating temperature		Flow rate at 6 bar with $\Delta p = 1$	Orifice size	Working ports size
	Filtered and lubricated or not lubricated air	10 bar	min. -5°C	max. +50°C	650 NI/min	ø 7	G1/8" - G1/4" - T.8

5/2

Pneumatic Spring



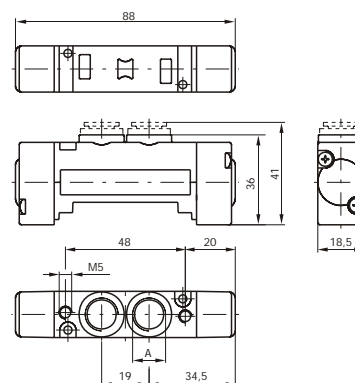
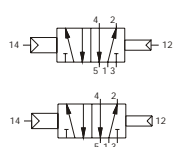
Weight gr. 105

Minimum operating pressure 2 bar

For dimension 'A'
see ordering code

5/2

Pneumatic Differential



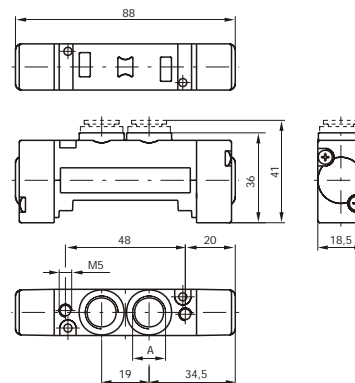
Weight gr. 105

Minimum operating pressure 2 bar

For dimension 'A'
see ordering code

5/2

Pneumatic Pneumatic



Weight gr. 105

Minimum operating pressure 1,5 bar

For dimension 'A'
see ordering code

Ordering codes

243 . 52 . 00 .

TYPE:

- 1 = Connection 'A' = G 1/4"
- 5 = Connection 'A' = G 1/8"
- 6 = Connection 'A' = Quick fitting, tube ø 6
- 8 = Connection 'A' = Quick fitting, tube ø 8

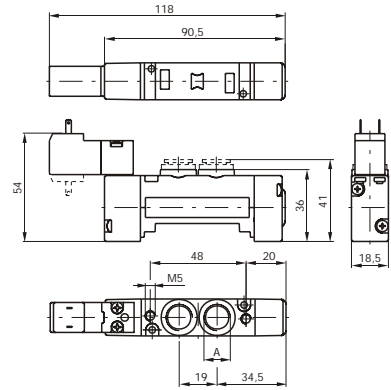
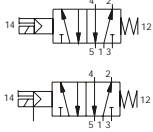
PILOTING:

- 16 = Pneum. - Diff./al
- 17 = Pneum. - Diff./al ext.
- 18 = Pneum. - Pneum.
- 19 = Pneum. - Spring

Operational characteristics	Fluid	Max working pressure	Operating temperature		Flow rate at 6 bar with $\Delta p = 1$	Orifice size	Working ports size
	Filtered and lubricated or not lubricated air	10 bar	min. -5°C	max. +50°C	800 NI/min	ø 7	G1/8" - G1/4" - T.8

5/2

**Miniature solenoid
Spring**



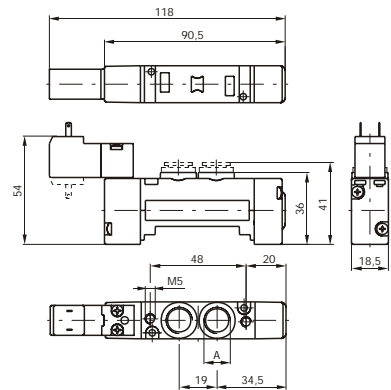
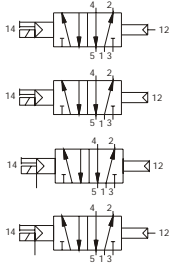
Weight gr. 140

Minimum operating pressure 2 bar

For dimension 'A'
see ordering code

5/2

**Miniature solenoid
Diff./al**



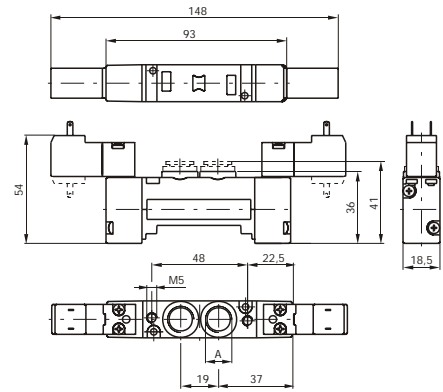
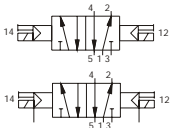
Weight gr. 140

Minimum operating pressure 2 bar

For dimension 'A'
see ordering code

5/2

**Miniature solenoid
Miniature solenoid**



Weight gr. 175

Minimum operating pressure 1,5 bar

For dimension 'A'
see ordering code

Ordering codes

243 . 52 . 00 . .

TYPE:
1 = Connection 'A' = G 1/4"
5 = Connection 'A' = G 1/8"
6 = Connection 'A' = Quick fitting, tube ø 6
8 = Connection 'A' = Quick fitting, tube ø 8

PILOTING:
24 = Sv. ext. - Sv. ext.
26 = Sv. ext. - Diff./al
27 = Sv. ext. - Diff./al ext.
29 = Sv. ext. - Spring
35 = Sv. - Sv.
36 = Sv. - Diff./al
37 = Sv. - Diff./al ext.
39 = Sv. - Spring

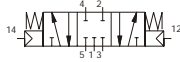
VOLTAGE:
01 = Miniature sol. 12 VDC
02 = Miniature sol. 24 VDC
05 = Miniature sol. 24 VAC
06 = Miniature sol. 110 VAC
07 = Miniature sol. 220 VAC
11 = Miniature sol. 12 VDC Downward
12 = Miniature sol. 24 VDC Downward
15 = Miniature sol. 24 VAC Downward
16 = Miniature sol. 110 VAC Downward
17 = Miniature sol. 220 VAC Downward

Operational characteristics	Fluid	Max working pressure	Operating temperature		Flow rate at 6 bar with $\Delta p = 1$	Orifice size	Working ports size
	Filtered and lubricated or not lubricated air	10 bar	min. -5°C	max. +50°C	800 NI/min	ø 7	G1/8" - G1/4" - T.8

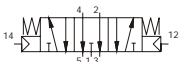
5/3

**Pneumatic
Pneumatic**

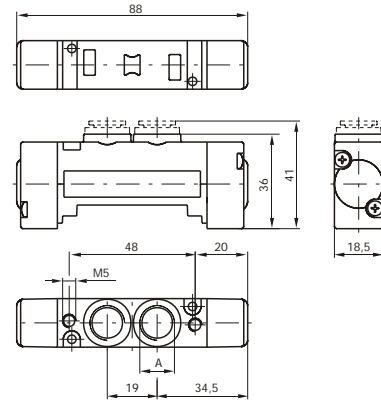
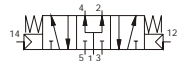
Closed centres



Open centres



Pressure centres



Weight gr. 115

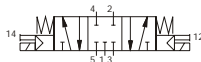
Minimum operating pressure 3 bar

For dimension 'A'
see ordering code

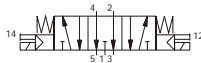
5/3

**Miniature solenoid
Miniature solenoid**

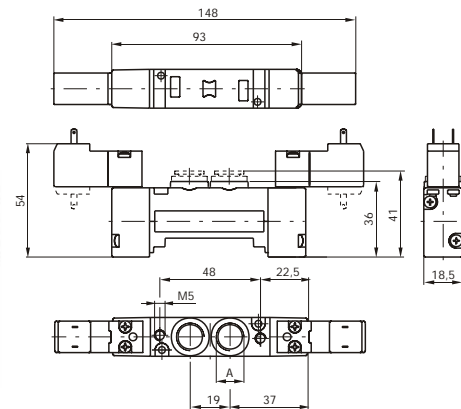
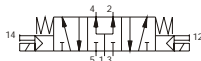
Closed centres



Open centres



Pressure centres



Weight gr. 185

Minimum operating pressure 3 bar

For dimension 'A'
see ordering code

Ordering codes

243 . 53

TYPE:

- 1 = Connection 'A' = G 1/4"
- 5 = Connection 'A' = G 1/8"
- 6 = Connection 'A' = Quick fitting, tube ø 6
- 8 = Connection 'A' = Quick fitting, tube ø 8

PILOTING:

- 18 = Pneum. - Pneum.
- 35 = Sv. - Sv.

VOLTAGE:

- 01 = Miniature sol. 12 VDC
- 02 = Miniature sol. 24 VDC
- 05 = Miniature sol. 24 VAC
- 06 = Miniature sol. 110 VAC
- 07 = Miniature sol. 220 VAC
- 11 = Miniature sol. 12 VDC Downward
- 12 = Miniature sol. 24 VDC Downward
- 15 = Miniature sol. 24 VAC Downward
- 16 = Miniature sol. 110 VAC Downward
- 17 = Miniature sol. 220 VAC Downward

FUNCTION:

- 31 = 3 pos. CC
- 32 = 3 pos. OC
- 33 = 3 pos. PC

Operational characteristics	Fluid	Max working pressure	Operating temperature		Flow rate at 6 bar with $\Delta p = 1$	Orifice size	Working ports size
	Filtered and lubricated or not lubricated air	10 bar	min. -5°C	max. +50°C	650 NI/min	ø 7	G1/8" - G1/4" - T.8