



**General**

Derived from 1320 series ISO 15552 the twin rod cylinders are suitable for applications that require the non rotation of the piston rod and resistance of flexion. This is done mounting the cylinder with the rod parallel to the radial load action.

The technical characteristics are similar to 1320 series of which many components are interchangeable.

The accuracy of the mechanical processing of the front cover, piston and flange allow a particularly soft movement and efficient cushioning. For long stroke it is possible to obtain a better guided and precise movements by using cylinders with front head longer then 25 mm.

The steel front flange can be directly fixed to the load and can be fitted with a threaded nipple to conform to ISO standard 6431.

The mounting brackets for the front cover derive from 1320 series with some modifications, while all other mountings remain the same.

**Construction characteristics**

Front cover	anodized aluminium
Rear cover	UNI 5079 aluminium alloy casting
Rod	C43 chromed steel AISI 303 stainless steel chromed
Barrel	Ra = 0,3-0,5 anodized aluminium
Cushion bushings	hard aluminium
Piston	vulcanized NBR 80 shore rubber block on steel core with incorporated permanent magnet; NBR 80 shore rubber block without magnet plus rear spacer (for non-magnetic version)
Flange	zinc plated steel
Rod seal	self-lubricating 90 shore hardness polyurethane
Other seals	NBR 80 shore rubber
Cushioning adjustment screws	nickel-plated steel

**Technical characteristics**

Fluid	filtered and lubricated air
Max pressure	10 bar
Working temperature	-5°C ÷ +70°C

Attention: We recommend using dry air if the working temperature is lower than 0°C.

**Cushioning lengths**

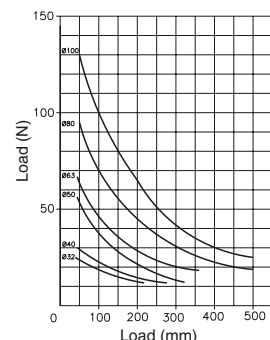
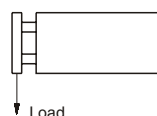
Bore	Ø	32	40	50	63	80	100
Front lenght	mm	22	22	24	32	32	32
Rear lenght	mm	28	32	32	40	44	50

**Standard strokes**

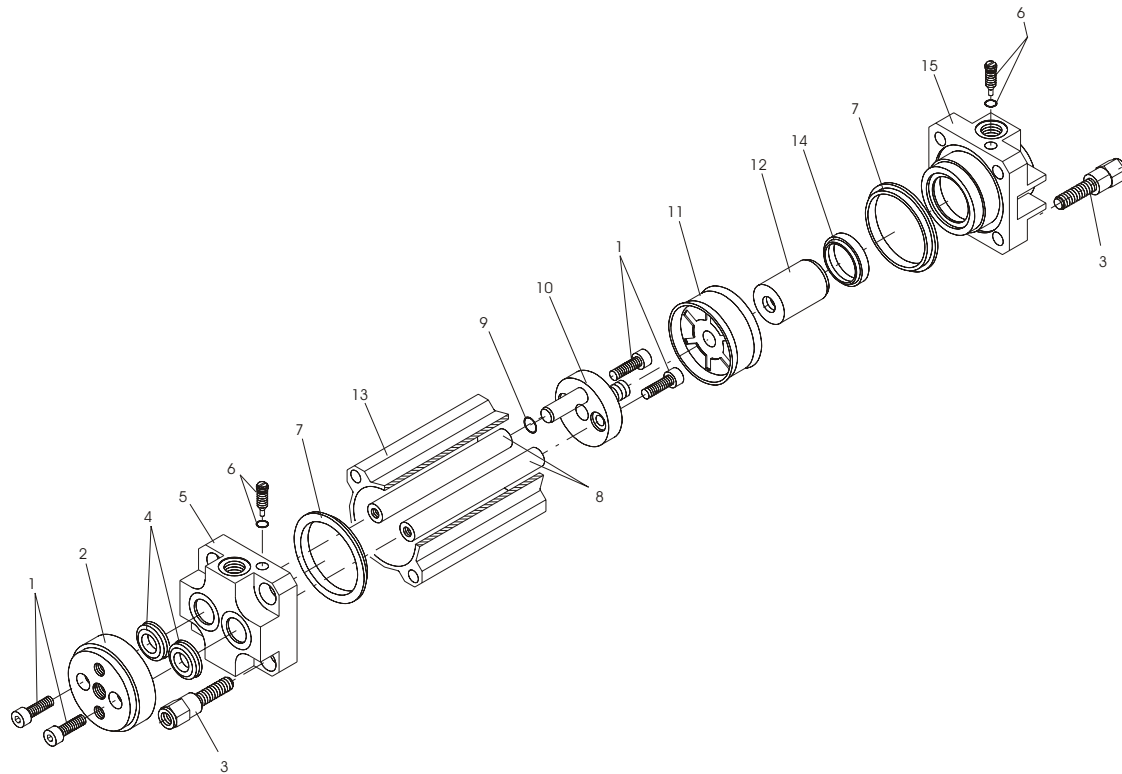
- Ø 32 25 - 50 - 75 - 100 - 150 - 200 mm
- Ø 40 25 - 50 - 75 - 100 - 150 - 200 - 250 mm
- Ø 50 25 - 50 - 75 - 100 - 150 - 200 - 250 - 300 mm
- Ø 63 25 - 50 - 75 - 100 - 150 - 200 - 250 - 300 - 350 mm
- Ø 80 25 - 50 - 75 - 100 - 150 - 200 - 250 - 300 - 350 - 400 - 500 mm
- Ø 100 25 - 50 - 75 - 100 - 150 - 200 - 250 - 300 - 350 - 400 - 500 mm

**Stroke tolerance (ISO 6431)**

Bore	Stroke	Tolerance
32 - 40 - 50	Up to 500 mm	+2
63 - 80 - 100		0



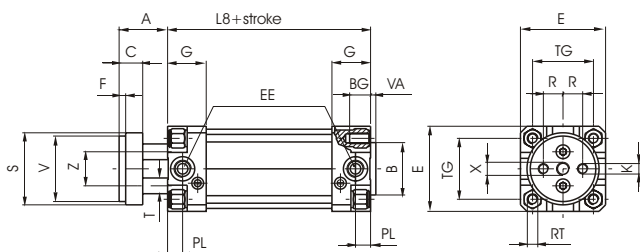
**Drawing**



Pos.	Description	N. Pieces
1	Screw	4
2	Flange	1
3	Tie nut	8
4	Rod seal	2
5	Front cover	1
6	Front cushioning adjustment screw	1
7	Cover seal	2
8	Rods	2
9	Front cushion seal	1
10	Front cushion bearing	1
11	Piston	1
12	Rear cushion bearing	1
13	Barrel	1
14	Rear cushion seal	1
15	Rear cover	1



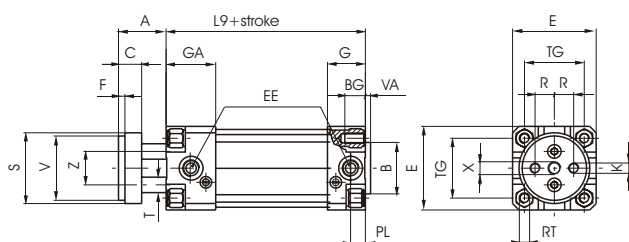
**Basic version**



Ordering code	
<b>1325.Ø.stroke.01</b>	magnetic
<b>1326.Ø.stroke.01</b>	non magnetic
<b>1325.Ø.stroke.01X</b>	magnetic chromed stainless steel
<b>1326.Ø.stroke.01X</b>	non magnetic chromed stainless steel

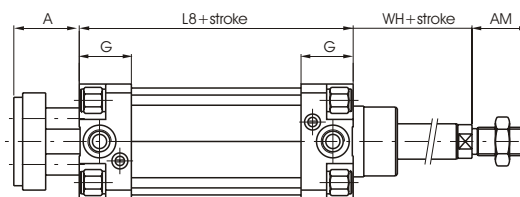
Bore	32	40	50	63	80	100	
A	26	30	37	37	46	51	
AM	22	24	32	32	40	40	
B	30	35	40	45	45	55	
BG	12	12	16	16	20	20	
C	15	15	18	22	22	22	
E	46	52	65	75	95	115	
EE	G 1/8"	G 1/4"	G 1/4"	G 3/8"	G 3/8"	G 1/2"	
F	4	4	5	5	5	5	
G	25	29	29,5	36	36	40	
GA	50	54	54,5	61	61	65	
K	M6	M8	M8	M10	M12	M12	
L 8	94	105	106	121	128	138	
L 9	119	130	131	146	153	163	
PL	9	11,5	11,5	14	14	16	
R	9,5	11,25	15	19	25	35	
RT	M6	M6	M8	M8	M10	M10	
S	35	45	55	70	85	105	
T	8	10	12	16	20	20	
TG	32,5	38	46,5	56,5	72	89	
V	32	40	50	63	80	100	
VA	4	4	4	4	4	4	
Z	18	22	26	35	40	50	
WH	26	30	37	37	46	51	
X	M8	M10	M10	M12	M14	M14	
Weight gr.	Stroke 0	560	810	1380	2300	3680	5740
		650	950	1500	2500	4100	6300
Every 10 mm.		20	26	30	40	80	90

**Extended front cover**



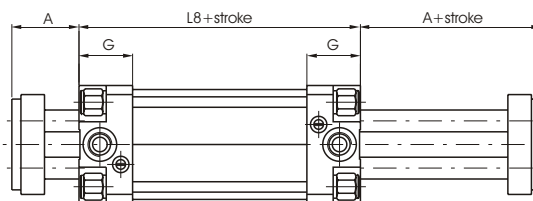
Ordering code	
<b>1345.Ø.stroke.01</b>	magnetic
<b>1347.Ø.stroke.01</b>	non magnetic
<b>1345.Ø.stroke.01X</b>	magnetic chromed stainless steel
<b>1347.Ø.stroke.01X</b>	non magnetic chromed stainless steel

**Push-pull rod version with ISO standard**



Ordering code		Ordering code	
<b>1325.Ø.stroke.02</b>	magnetic	<b>1325.Ø.stroke.02X</b>	magnetic chromed stainless steel
<b>1326.Ø.stroke.02</b>	non magnetic	<b>1326.Ø.stroke.02X</b>	non magnetic chromed stainless steel

**Twin rod push-pull version**



Ordering code		Ordering code	
<b>1325.Ø.stroke.06</b>	magnetic	<b>1325.Ø.stroke.06X</b>	magnetic chromed stainless steel
<b>1326.Ø.stroke.06</b>	non magnetic	<b>1326.Ø.stroke.06X</b>	non magnetic chromed stainless steel



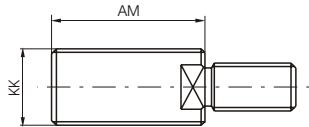
**Magnetic sensors**

The magnetic sensors used with this series of cylinders are the same as the 1320 series.

**Accessories**

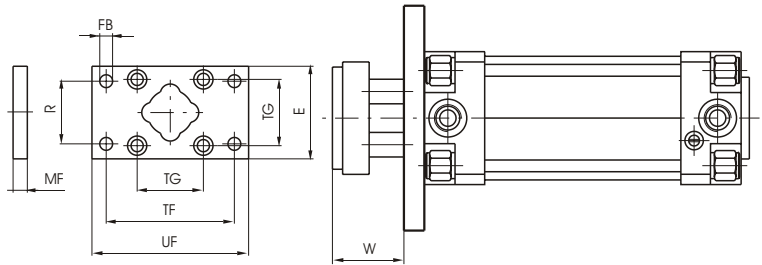
All of the attachments of the 1320 series can be mounted, with the exclusion of the front flange and the foot mounting bracket that, although they are part of the same series, need a small adjustment in the exit zone of the rods. For these there is a different code and the dimensions are indicated below.

**Threaded Nipple**



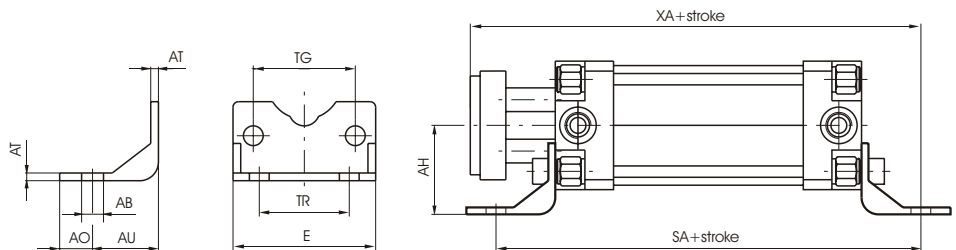
Bore	32	40	50	63	80	100
AM	22	24	32	32	40	40
KK	M10x1,25	M12x1,25	M16x1,5	M16x1,5	M20x1,5	M20x1,5
Weight gr	17	27	63	65	110	110
Ordering code				<b>1325.Ø.17F</b>		

**Front flange**



Bore	32	40	50	63	80	100
E	45	52	65	75	95	115
FB (H 13)	7	9	9	9	12	14
MF (JS 14)	10	10	12	12	16	16
R (JS 14)	32	36	45	50	63	75
TF (JS 14)	64	72	90	100	126	150
TG	32,5	38	46,5	56,5	72	89
UF	80	90	110	120	150	170
W	16	20	25	25	30	35
Ordering code				<b>1325.Ø.03F</b>		
Weight gr	160	250	480	620	1430	3500

**Front foot mounting bracket (short)**



Bore	32	40	50	63	80	100
AB (H 14)	7	9	9	9	12	14
AH (JS 15)	32	36	45	50	63	71
AO (±0,2)	11	8	13	13	14	15
AT	3,5	3,5	3,5	4,5	5	5
AU	24	28	32	32	41	41
E	45	52	65	75	95	115
SA	142	161	170	185	210	220
TG	32,5	38	46,5	56,5	72	89
TR (JS 14)	32	36	45	50	63	75
XA	144	163	175	190	215	230
Ordering code				<b>1325.Ø.05/1F (1 piece)</b>		
Weight gr	50	70	120	180	320	400