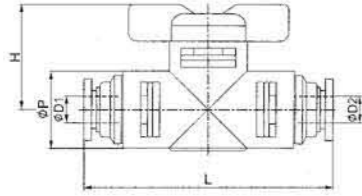


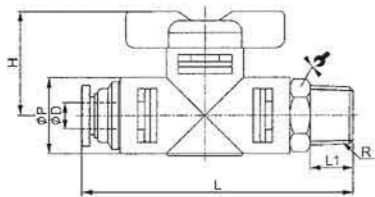


**BVU 球阀**



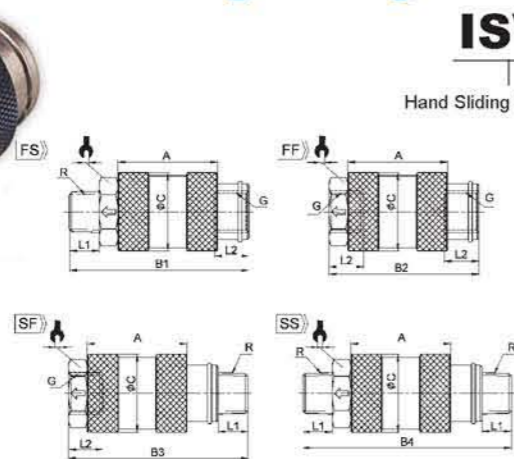
MODEL	ΦD1	ΦD2	ΦP	L	H
BVU06	6	6	17	56	23
BVU08	8	8	17	58	23
BVU10	10	10	24	78	28
BVU12	12	12	24	80	28
BVU08-06	8	6	17	57	23
BVU12-10	12	10	24	79	28

**BVC 球阀**



MODEL	ΦD	R	ΦP	L	L1	H	⚡
BVC06-01	6	R1/8	17	58	7.5	23	17
BVC06-02		R1/4	17	60	9.5	23	17
BVC06-03		R3/8	17	61	10.5	23	17
BVC08-01	8	R1/8	17	59	7.5	23	17
BVC08-02		R1/4	17	61	9.5	23	17
BVC08-03		R3/8	17	62	10.5	23	17
BVC10-02	10	R1/4	24	82	9.5	28	24
BVC10-03		R3/8	24	83	10.5	28	24
BVC10-04		R1/2	24	86	13.5	28	24
BVC12-02	12	R1/4	24	83	9.5	28	24
BVC12-03		R3/8	24	84	10.5	28	24
BVC12-04		R1/2	24	87	13.5	28	24

**手滑阀ISV(Hand Sliding Fitting)**



**ISV 01 - SS**

Hand Sliding Fittings

FS: 内外牙型 (标准型) Female-Male (standard type)  
 SS: 双外牙型/Male-Male  
 FF: 双内牙型/Female-Female  
 SF: 外内牙型/Male-Female

螺纹型号  
 Thread Size  
 01=1/8"  
 02=1/4"  
 03=3/8"  
 04=1/2"

MODEL	A	B1	B2	B3	B4	ΦC	L1	L2	G	R	⚡
ISV 01	20	40	32	40	47	20	7.5	8.5	G1/8	R1/8	14
ISV 02	32	58	48	58	68	25	9.5	11.5	G1/4	R1/4	19
ISV 03	32	59	48	59	69	30	10.5	12.5	G3/8	R3/8	22
ISV 04	40	72	58	72	85	37	13.5	15.5	G1/2	R1/2	27

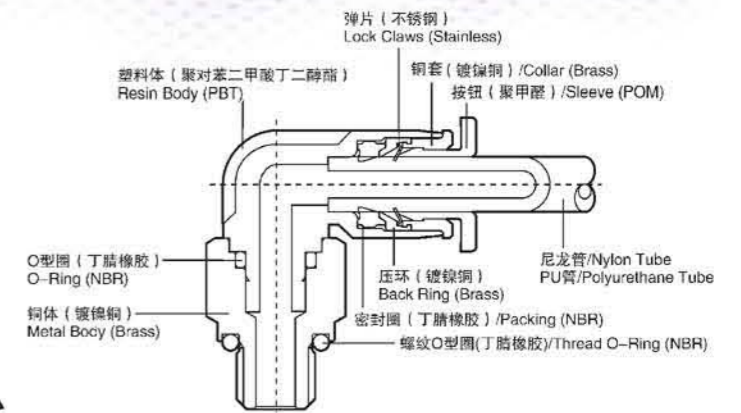
**迷你接头 MINI FITTINGS**



**特点/ FEATURES**

- 超小型产品 (COMPACT), 比普通型号体积小40%, 外型尺寸小20%, 是小型化的ONE-TOUCH FITTING.
- 由于表面有镀铬处理, 所以耐腐蚀性突出.

**结构图/ STRUCTURE CHART**



**公制-锥螺纹/ METRIC-BSPT( R)**

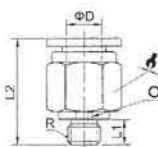
超小型接头 Compact one touch fitting	螺纹型号 Thread Size	超小型 Compact Nickel
气管直径 Tube Dia	规格/Code	尺寸/Size
03	03	Φ3
04	04	Φ4
06	06	Φ6
	公制螺纹/ Metric Thread	型号/Size
	M3	M3x0.5
	M5	M5x0.8
	M6	M6x1.0
	锥螺纹/ R (PT) Thread	型号/Code
	01	R1/8

**技术参数/ SPECIFICATIONS**

使用流体/Fluid	空气 (无其他气体和液体) /Air (No other gases or liquids)	
使用压力范围/Operating Pressure	0-150PSI	0~9.9Kgf/cm <sup>2</sup> ( 0~990kpa )
负压/Negative Pressure	-29.5in Hg	-750mmHg ( 10Torr )
使用温度范围/ Operating Temperature	32~140°F	0~60°C
使用软管/Applicable Tube	PU及尼龙/Polyurethane and Nylon	

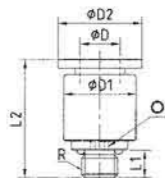


**PC-C 螺纹直通迷你型**



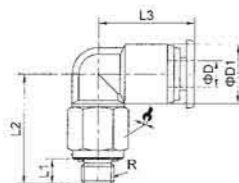
MODEL	$\phi D$	R	L1	L2	$\bigcirc$	$\hookrightarrow$
PC03-M3C	3	M3X0.5	3.5	15		8
PC03-M5C		M5X0.8	3.5	16	2	8
PC03-01C		R1/8	7.5	15	2	10
PC04-M3C	4	M3X0.5	3.5	17.5		8
PC04-M5C		M5X0.8	3.5	18.5	2	8
PC04-M6C		M6X1.0	4	19	2	10
PC04-01C		R1/8	7.5	16	3	10
PC06-M5C	6	M5X0.8	3.5	18	2	10
PC06-M6C		M6X1.0	4	18.5	2	10
PC06-01C		R1/8	7.5	18.5	4	10

**POC-C 圆螺纹直通迷你型**



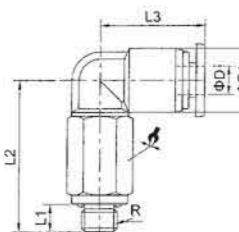
MODEL	$\phi D$	R	L1	L2	$\phi D1$	$\phi D2$	$\bigcirc$
POC03-M3C	3	M3X0.5	3.5	15	6.5	7.5	
POC03-M5C		M5X0.8	3.5	16	8	7.5	2
POC04-M3C		M3X0.5	3.5	17.5	8	10	
POC04-M5C	4	M5X0.8	3.5	18	8	10	2
POC04-M6C		M6X1.0	4	18.5	8	10	2
POC04-01C		R1/8	7.5	15.5	10	10	3
POC06-M5C	6	M5X0.8	3.5	18	10	11.5	2
POC06-M6C		M6X1.0	4	18.5	10	11.5	2
POC06-01C		R1/8	7.5	18.5	10	11.5	4

**PL-C L型螺纹弯头迷你型**



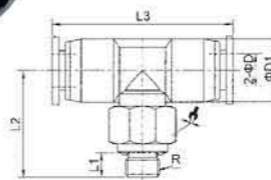
MODEL	$\phi D$	R	L1	L2	L3	$\phi D1$	$\hookrightarrow$
PL03-M3C	3	M3X0.5	3.5	16	12	7.5	8
PL03-M5C		M5X0.8	3.5	16	12	7.5	8
PL03-01C		R1/8	7.5	16.5	12	7.5	10
PL04-M3C	4	M3X0.5	3.5	16.5	14	9.5	8
PL04-M5C		M5X0.8	3.5	16.5	14	9.5	8
PL04-M6C		M6X1.0	4	17	14	9.5	10
PL04-01C		R1/8	7.5	18.5	14	9.5	10
PL06-M5C	6	M5X0.8	3.5	17.3	16	11.5	8
PL06-M6C		M6X1.0	4	18	16	11.5	10
PL06-01C		R1/8	7.5	19	16	11.5	10

**PLL-C 加长L型螺纹弯头迷你型**



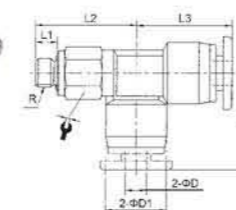
MODEL	$\phi D$	R	L1	L2	L3	$\phi D1$	$\hookrightarrow$
PLL03-M3C	3	M3X0.5	3.5	24	12	7.5	8
PLL03-M5C		M5X0.8	3.5	24	12	7.5	8
PLL03-01C		R1/8	7.5	24.5	12	7.5	10
PLL04-M3C	4	M3X0.5	3.5	28	14	9.5	8
PLL04-M5C		M5X0.8	3.5	28	14	9.5	8
PLL04-M6C		M6X1.0	4	29	14	9.5	10
PLL04-01C		R1/8	7.5	29	14	9.5	10
PLL06-M5C	6	M5X0.8	3.5	29.5	16	11.5	8
PLL06-M6C		M6X1.0	4	30	16	11.5	10
PLL06-01C		R1/8	7.5	31	16	11.5	10

**PB-C 螺纹正三通迷你型**



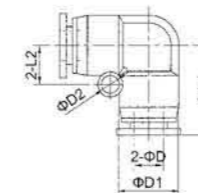
MODEL	$\phi D$	R	L1	L2	L3	$\phi D1$	$\hookrightarrow$
PB03-M3C	3	M3X0.5	3.5	16	24	7.5	8
PB03-M5C		M5X0.8	3.5	16	24	7.5	8
PB03-01C		R1/8	7.5	16.5	24	7.5	10
PB04-M3C	4	M3X0.5	3.5	16.5	28	9.5	8
PB04-M5C		M5X0.8	3.5	16.5	28	9.5	8
PB04-M6C		M6X1.0	4	17	28	9.5	10
PB04-01C		R1/8	7.5	18.5	28	9.5	10
PB06-M5C	6	M5X0.8	3.5	17.3	32	11.5	8
PB06-M6C		M6X1.0	4	18	32	11.5	10
PB06-01C		R1/8	7.5	19	32	11.5	10

**PD-C 螺纹侧三通迷你型**



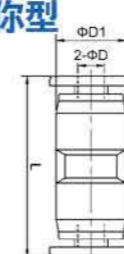
MODEL	$\phi D$	R	L1	L2	L3	$\phi D1$	$\hookrightarrow$
PD03-M3C	3	M3X0.5	3.5	16	12	7.5	8
PD03-M5C		M5X0.8	3.5	16	12	7.5	8
PD03-01C		R1/8	7.5	16.5	12	7.5	10
PD04-M3C	4	M3X0.5	3.5	16.2	14	9.5	8
PD04-M5C		M5X0.8	3.5	16.7	14	9.5	8
PD04-M6C		M6X1.0	4	17.2	14	9.5	10
PD04-01C		R1/8	7.5	18.6	14	9.5	10
PD06-M5C	6	M5X0.8	3.5	17.7	14.5	11.5	8
PD06-M6C		M6X1.0	4	18.2	14.5	11.5	10
PD06-01C		R1/8	7.5	18.6	14.5	11.5	10

**PV-C 塑料弯头迷你型**



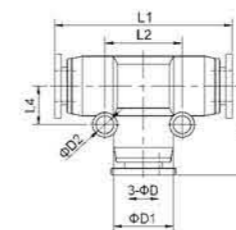
MODEL	$\phi D$	$\phi D1$	$\phi D2$	L1	L2
PV03C	3	7.5	3.2	12	4.8
PV04C	4	9.5	3.2	14.5	6
PV06C	6	11.5	3.2	16	6.5

**PU-C 塑料直通迷你型**



MODEL	$\phi D$	$\phi D1$	L
PU03C	3	7.5	21
PU04C	4	9.5	26.5
PU06C	6	11.5	27.5

**PE-C 塑料正三通迷你型**



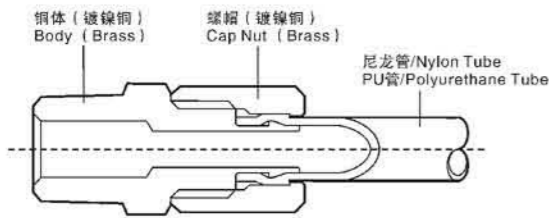
MODEL	$\phi D$	$\phi D1$	$\phi D2$	L1	L2	L3	L4
PE03C	3	7.5	3.2	23.5	9.6	11.8	4.8
PE04C	4	9.5	3.2	29	12	14.5	6
PE06C	6	11.5	3.2	32	13	16	6.5

迷你接头  
MINI FITTINGS

迷你接头  
MINI FITTINGS



**结构图/ STRUCTURE CHART**



**技术参数/ SPECIFICATIONS**

使用流体/Fluid	空气 (无其他的气体或液体) /Air (No other gases or liquids)	
使用压力范围/Operating Pressure	0~150PSI	0~9.9Kgf/cm <sup>2</sup> (0~990kpa)
负压/Negative Pressure	-29.5in Hg	-750mmHg (10Torr)
使用温度范围/ Operating Temperature	32~140°F	0~60°C
使用软管/Applicable Tube	PU/Polyurethane	

**特点/ FEATURES**

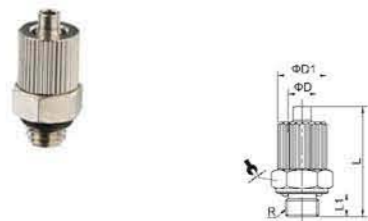
迷你接头安装空间小。  
The Mini Fittings have the small installation space.  
迷你接头广泛的应用于尼龙管, 并且也能承受高压。  
The Mini Fittings are used in Nylon Tube extensively, and are able to bear high pressure.

**公制-锥螺纹/ METRIC-BSPT (R)**

**TC 04 - 01**

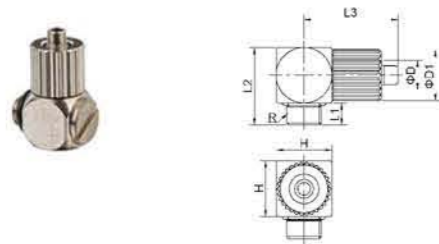
Two Touch Fitting	气管直径 Tube Dia	规格 Code		O.D		I.D		螺纹型号 Thread Size
		04	06	08	Φ4	Φ6	Φ8	1 2 3
					Φ2.5	Φ4	Φ5.5	R1/8 R1/4 R3/8

**TC 压合型直通**



MODEL	ΦD	R	L1	L	ΦD1	⚡
TC03-M3	3	M3X0.5	3	15.2	6	7
TC03-M5	3	M5X0.8	3.5	15.5	6	7
TC04-M3	4	M3X0.5	3	17	7.5	8
TC04-M5	4	M5X0.8	3.5	17	7.5	8
TC04-M6	4	M6X1.0	4	17	7.5	10
TC04-01		R1/8	7.5	20.5	7.5	14
TC06-M5	6	M5X0.8	3.5	20.3	9.5	10
TC06-M6	6	M6X1.0	4	20.8	9.5	10
TC06-01		R1/8	7.5	23.3	9.5	14

**TL 压合型弯头**



MODEL	ΦD	R	H	L1	L2	L3	ΦD1
TL03-M5	3	M3X0.5	8	3	12	13.5	6
TL04-M3	4	M3X0.5	8	3	10.5	13.5	7.5
TL04-M5	4	M5X0.8	8	3.5	12	13.5	7.5
TL04-M6	4	M6X1.0	10	4	12.5	14.5	7.5
TL04-01		R1/8	14	7.5	19.5	16.5	7.5
TL06-M5	6	M5X0.8	10	3.5	14	17.3	9.5
TL06-M6	6	M6X1.0	10	4	14.3	17.3	9.5
TL06-01		R1/8	14	7.5	19.5	19.3	9.5

**PTC 压合型塑料直通**



MODEL	ΦD	R	L1	L2	ΦD1	⚡
PTC06-01	6	R1/8	8	29	14	12
PTC06-02	6	R1/4	11	32	14	14
PTC08-01	8	R1/8	8	30.5	16	14
PTC08-02	8	R1/4	11	33.5	16	14

**PTL 压合型塑料弯头**



MODEL	ΦD	R	L	L1	L2	ΦD1	⚡
PTL06-01	6	R1/8	8	17	22	14	12
PTL06-02	6	R1/4	11	20	22	14	12
PTL08-01	8	R1/8	8	17	23.5	16	12
PTL08-02	8	R1/4	11	20	23.5	16	12

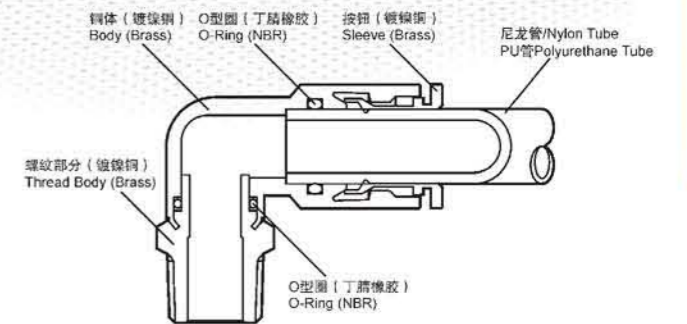
**全铜快插式&快拧式气动管接头  
PUSH-IN FITTINGS**



**特点/ FEATURES**

全铜快插式&快拧式气动管接头用于气动管类系统  
Push-in fitting are used in pneumatics piping.  
管接头具有各种各样的型号, 可以满足你在气动管类系统中的所有需要  
The tube fittings come in a wide variety of models to meet all your needs in pneumatics piping.  
即使安装之后, 管道的方向仍然可以自由改变  
Even after installation, the direction of the tube can be changed freely.  
镀镍的铜体可以防腐蚀和污染  
Nickel-Plated metal body ensures Anti-Corrosion and Anti-Contamination  
所有R跟NPT螺纹胶都起密封作用  
All R and NPT threads are Pre-Coated sealant.  
所有直螺纹都用标准的O型圈  
All cylindrical threads are standard with O-Ring seals.

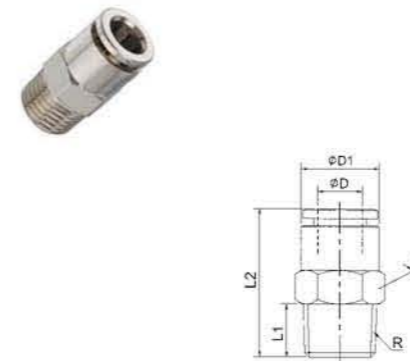
**结构图/ STRUCTURE CHART**



**技术参数/ SPECIFICATIONS**

使用温度范围/Operating Temperature	-20°C~+80°C
使用压力范围/Operating Pressure	0~1.0Mpa
使用流体/Fluid	空气, 真空/Air, Vacuum
使用软管/Applicable Tube	PU及尼龙 / Polyurethane and Nylon

**IPCT 全铜螺纹直通**



MODEL	ΦD	R	L1	L2	ΦD1	⚡
IPCT04-M5	4	M5	3.5	20.2	8	8
IPCT04-01	4	R1/8	7.5	19	8.5	10
IPCT04-02	4	R1/4	9.5	20.5	8.5	14
IPCT06-M5	6	M5	3.5	24.7	12	12
IPCT06-01	6	R1/8	7.5	24.7	12	12
IPCT06-02	6	R1/4	9.5	24.5	12	14
IPCT06-03	6	R3/8	10.5	23	12	17
IPCT06-04	6	R1/2	13.5	26	12	21
IPCT08-01	8	R1/8	7.5	28.7	14	14
IPCT08-02	8	R1/4	9.5	27.7	14	14
IPCT08-03	8	R3/8	10.5	22.7	14	17
IPCT08-04	8	R1/2	13.5	26	14	21
IPCT10-01	10	R1/8	7.5	31	16	16
IPCT10-02	10	R1/4	9.5	33	16	16
IPCT10-03	10	R3/8	10.5	27	16	17
IPCT10-04	10	R1/2	13.5	26	16	21
IPCT12-02	12	R1/4	9.5	35	18	19
IPCT12-03	12	R3/8	10.5	31.7	18	19
IPCT12-04	12	R1/2	13.5	26.2	18	21